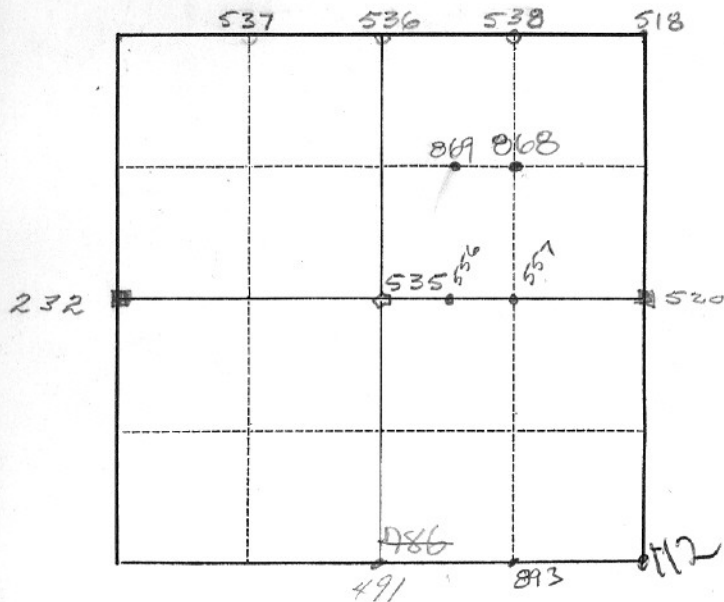


Card..... of.....

TWP. 11N, RANGE 11E E., W.M.

SECTION 18



W 1/4	232
S 1/4 COR	491
E 1/4 COR	520
CEN 1/4	535
N 1/4 COR	536
W 1/16 7/18	537
E 1/16 7/18	538
NE COR	518
1/32 EAST OF CEN	556
CE 1/16 COR	557
SW 1/4	869
NE 1/16	868
NW PROP COR	869