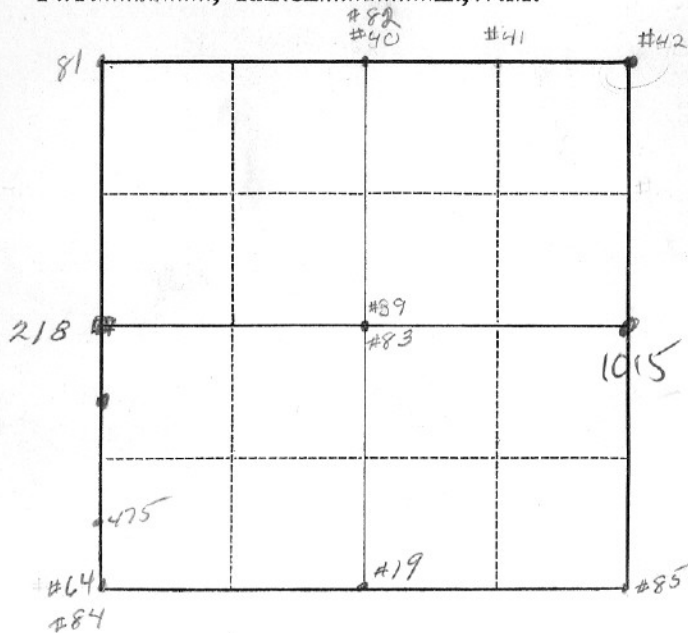


TWP. 1N, RANGE 9E E., W.M.

SECTION 13



- S 1/4 Cor #19
- C 1/4 Cor #39483
- N 1/4 Cor #40482
- N/NE 1/6 Cor #41
- NF Cor #42
- SW Cor #64484
- NW Cor #810
- SE Cor #85
- W 1/4 218
- NW Cor Lot 57 475