

WILLIAM JENKINS

SECTION OR SUBDIVISION DLC #38 SEC 35

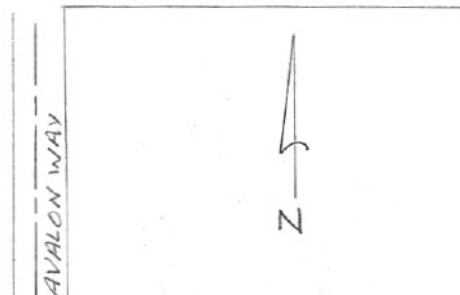
CORNER No. DLC #1

TWP. 3N, RANGE 10 E, W.M.

CORNER DESCRIPTION

Fd. I. P. D. A. INC.

BELMONT RD
120' I. PIPE



W.O. REF. # 72234 DIELSCHNEIDER
ASSOCIATES INC.

CARD OF
Over →

R.P. July 30 1998

cor will be destroyed by road construction.

