

# SURVEYOR'S CERTIFICATE

I, ORAN D. ABBOTT, BEING FIRST DULY SWORN, DEPOSE AND SAY THAT I HAVE CORRECTLY SURVEYED AND MARKED WITH PROPER MONUMENTS THE LANDS REPRESENTED ON THE ANNEXED MAP OF "GORGE VIEW CONDOMINIUMS" AND THAT FOR THE INITIAL POINT OF THE SURVEY I SET A 2" X 36" GALVANIZED IRON PIPE WITH A 2.5" BRASS CAP ATTACHED, SET IN CONCRETE 6" BELOW THE SURFACE OF THE GROUND, SAID INITIAL POINT BEING NORTH 85° 30' 17" WEST 277.75 FEET FROM A FOUND STONE WITH TACK AT THE N.E. CORNER OF THE JENKINS D.L.C. # 38; THENCE NORTH 89° 08' 56" WEST 352.12 FEET TO A 5/8" IRON ROD; THENCE NORTH 89° 23' 43" WEST 44.90 FEET TO A 5/8" IRON ROD; THENCE NORTH 00° 12' 49" EAST 140.86 FEET TO A 5/8" IRON ROD; THENCE SOUTH 89° 57' 00" EAST 397.00 FEET TO A FOUND 1/2" IRON ROD; THENCE SOUTH 00° 12' 49" WEST 146.19 FEET TO THE POINT OF BEGINNING.

I, ORAN D. ABBOTT, A REGISTERED PROFESSIONAL LAND SURVEYOR CERTIFY THAT THIS PLAT FULLY AND ACCURATELY DEPICTS THE BOUNDARIES OF THE UNITS OF THE BUILDING AND THAT CONSTRUCTION OF THE UNITS AND BUILDINGS AS DEPICTED ON THE PLAT HAS BEEN COMPLETED.

THIS 19<sup>TH</sup> DAY OF December, 1989

REGISTERED PROFESSIONAL LAND SURVEYOR

Oran D. Abbott  
OREGON  
JULY 30, 1976  
ORAN D. ABBOTT  
1066

I, ORAN D. ABBOTT, HEREBY CERTIFY THIS TO BE A TRUE AND EXACT COPY OF THE PLAT OF "GORGE VIEW CONDOMINIUMS"

G. Robert Taylor  
NOTARY PUBLIC - OREGON  
7-11-90

FILED

FEB 14, 1990

Richard G. Arnold  
COUNTY SURVEYOR

NOTARY

# GORGE VIEW CONDOMINIUMS

LOCATED IN THE SE. 1/4 SECTION 26, T.3N., R.10E., W.M.  
CITY OF HOOD RIVER, HOOD RIVER COUNTY, OREGON

DECEMBER 1989

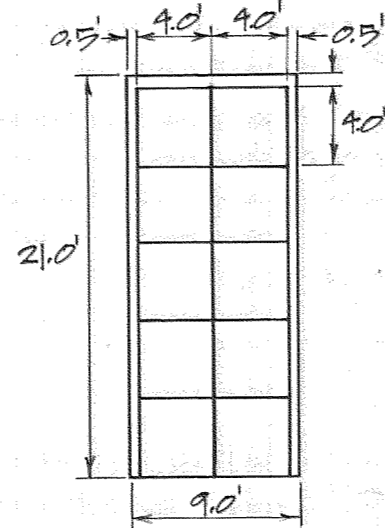
WILSEY & HAM PACIFIC  
1099 S.W. COLUMBIA ST.  
PORTLAND, OR. 97201  
(503) 227-0455  
PROJ. NO. 4-373-0101

SCALE: 1" = 20'

SIDE 1 OF 2

## NARRATIVE:

THE PURPOSE OF THIS SURVEY WAS TO CREATE A CONDOMINIUM PLAT ON THE SHOWN PARCEL AT THE REQUEST OF JANE SCHMIDT COOK AND RODNEY COOK. AS A BASIS OF BEARINGS, I HELD THE RECORDED SURVEY OF THIS PARCEL, P.S. 88034 WHICH SHOWS THE NORTH BOUNDARY AS S 89° 57' 00" E. AT THE REQUEST OF THE OWNERS I ADJUSTED THE WEST LINE 17.00 FEET TO THE WEST AND SET THE APPROPRIATE MONUMENTATION. REFERENCES INCLUDED P.S. 88034, P.S. 77114, P.S. 77120, P.S. 7509, P.S. 7367 AND THE PLAT OF IDLEWILD ADDITION TO HOOD RIVER.



TYPICAL SAILBOARD LOCKER DETAIL  
(L.C.E.)

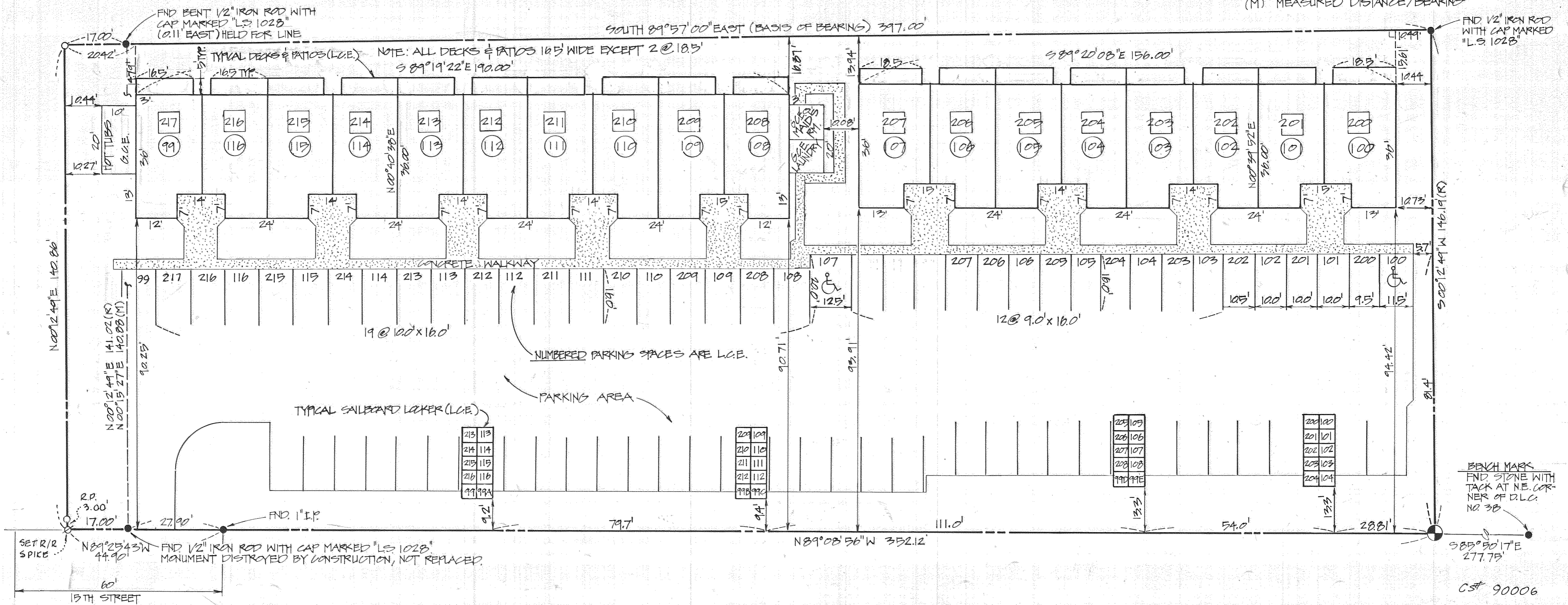
LAND: 54,534.56 SF  
1.252 ACRES

## INDEX & NOTES

- G.C.E. GENERAL COMMON ELEMENT
- L.C.E. LIMITED COMMON ELEMENT
- ⊙ INITIAL POINT OF PLAT
- FOUND MONUMENT AS NOTED
- SET 5/8" X 30" LONG IRON ROD WITH YELLOW CAP MARKED
- ⊙ INDICATES LOWER LEVEL UNIT NO.
- ⊙ INDICATES UPPER LEVEL UNIT NO.
- (R) RECORD DISTANCE/BEARINGS
- (M) MEASURED DISTANCE/BEARINGS

SCALE: 1" = 20'

I-84 (COLUMBIA RIVER HIGHWAY)



BENCH MARK  
FND STONE WITH TACK AT N.E. CORNER OF D.L.C. NO 38

CST 90006

**APPROVALS:**

THE ANNEXED MAP OF GORSE VIEW CONDOMINIUMS WAS EXAMINED AND APPROVED

THIS \_\_\_\_\_ DAY OF \_\_\_\_\_, 1989

HOOD RIVER CITY ENGINEER

THE ANNEXED MAP OF GORSE VIEW CONDOMINIUMS WAS EXAMINED AND APPROVED

THIS \_\_\_\_\_ DAY OF \_\_\_\_\_, 1989

HOOD RIVER CITY PLANNING COMMISSION

THE ANNEXED MAP OF GORSE VIEW CONDOMINIUMS WAS EXAMINED AND APPROVED

THIS 14 DAY OF Feb, 1989

Richard G. Arnold  
HOOD RIVER COUNTY SURVEYOR

THE ANNEXED MAP OF GORSE VIEW CONDOMINIUMS WAS EXAMINED AND APPROVED

THIS \_\_\_\_\_ DAY OF \_\_\_\_\_, 1989

MAYOR CITY RECORDER

THE DIRECTOR OF RECORDS AND ASSESSMENTS AND THE DIRECTOR OF BUDGET AND FINANCE AND TAX COLLECTOR, RESPECTIVELY OF HOOD RIVER COUNTY, OREGON, HEREBY CERTIFY THAT WE HAVE EXAMINED THE ANNEXED PLAT OF GORSE VIEW CONDOMINIUMS IN THE CITY OF HOOD RIVER AND THE NAME ADOPTED FOR SAID PLAT IS A PROPER NAME AND NOT INCLUDED IN ANY OTHER SUBDIVISION IN HOOD RIVER COUNTY, AND FURTHER CERTIFY THAT ALL ASSESSMENTS DUE HEREON HAVE BEEN FULLY PAID AS REQUIRED BY LAW AND WE HEREBY APPROVE SAID PLAT.

HOOD RIVER COUNTY DIRECTOR OF BUDGET AND FINANCE AND TAX COLLECTOR

HOOD RIVER COUNTY DIRECTOR OF RECORDS AND ASSESSMENTS

I, ORAN D. ABBOTT, A REGISTERED PROFESSIONAL LAND SURVEYOR CERTIFY THAT THIS PLAT FULLY AND ACCURATELY DEPICTS THE BOUNDARIES OF THE UNITS OF THE BUILDINGS AND THAT CONSTRUCTION OF THE UNITS AND BUILDINGS AS DEPICTED ON THE PLAT HAS BEEN COMPLETED.

THIS 19<sup>th</sup> DAY OF December, 1989

REGISTERED PROFESSIONAL LAND SURVEYOR

OREGON  
JULY 30, 1978  
ORAN D. ABBOTT  
1066

I, ORAN D. ABBOTT, HEREBY CERTIFY THIS TO BE A TRUE AND EXACT COPY OF THE PLAT OF "GORSE VIEW CONDOMINIUMS"

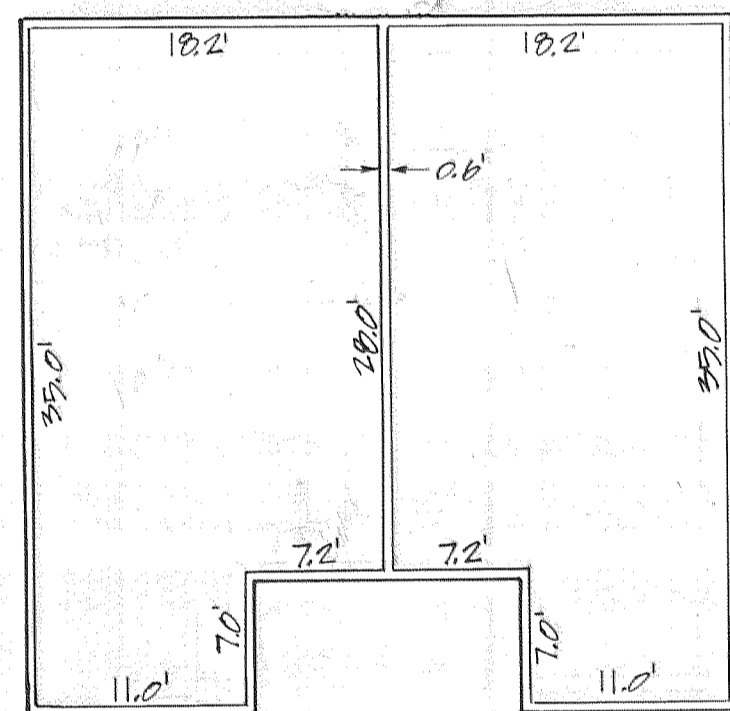
**FILED**

FEB 14, 1990

Richard G. Arnold  
COUNTY SURVEYOR

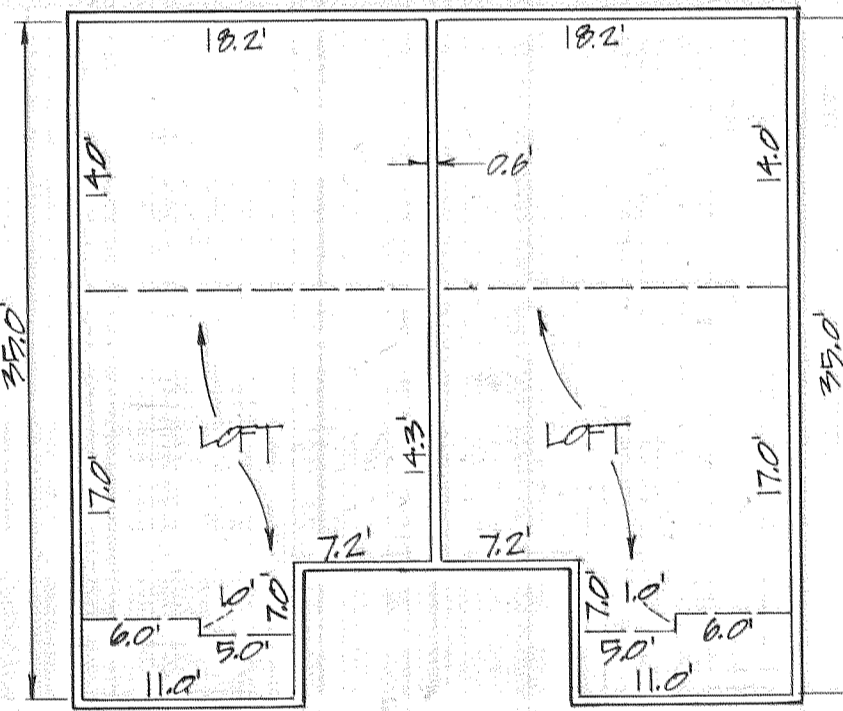
DEPLS

NOTE: ALL WALL THICKNESSES 2 1/2" EXCEPT AS NOTED.



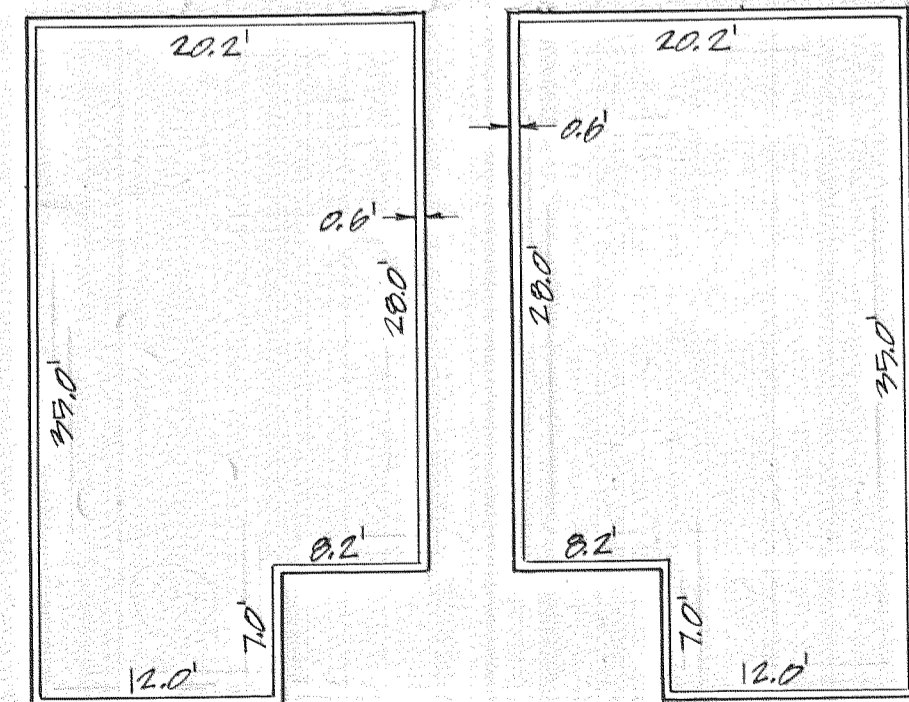
- TYPICAL UNITS
- 109, 103, 101, 107

- TYPICAL UNITS
- 116, 114, 112, 110
  - 106, 104, 102, 108

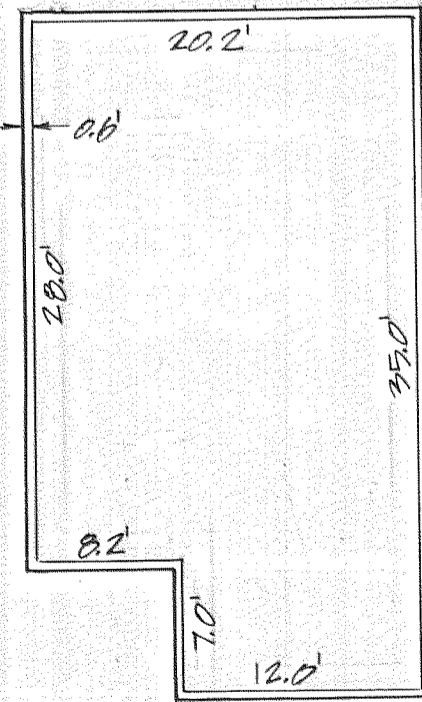


- TYPICAL UNITS
- 217, 215, 213, 211
  - 209, 207, 205, 203, 201

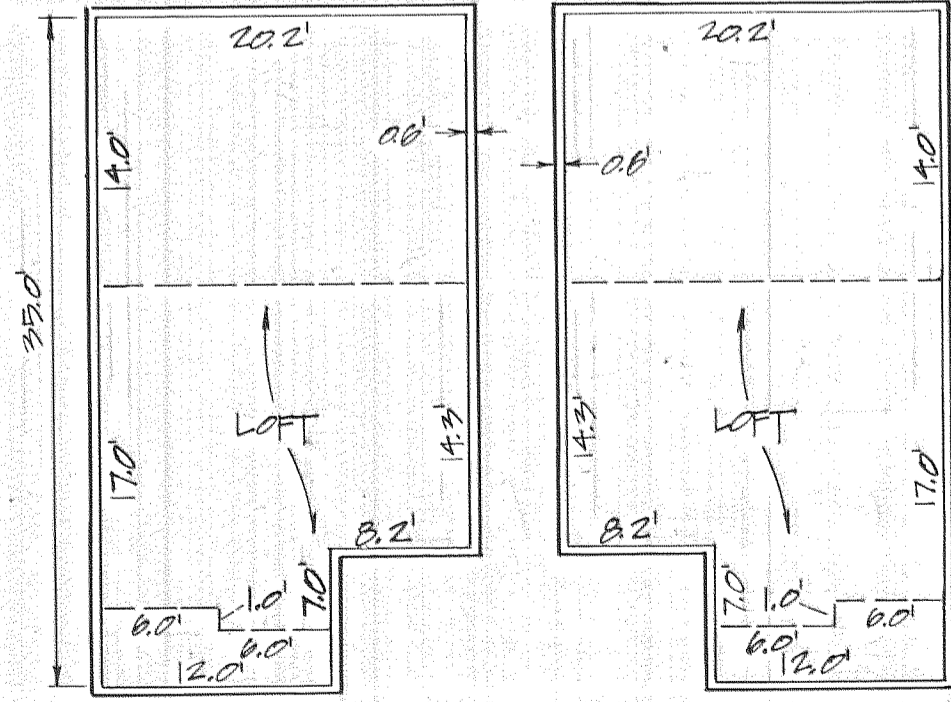
- TYPICAL UNITS
- 216, 214, 212, 210
  - 208, 206, 204, 202



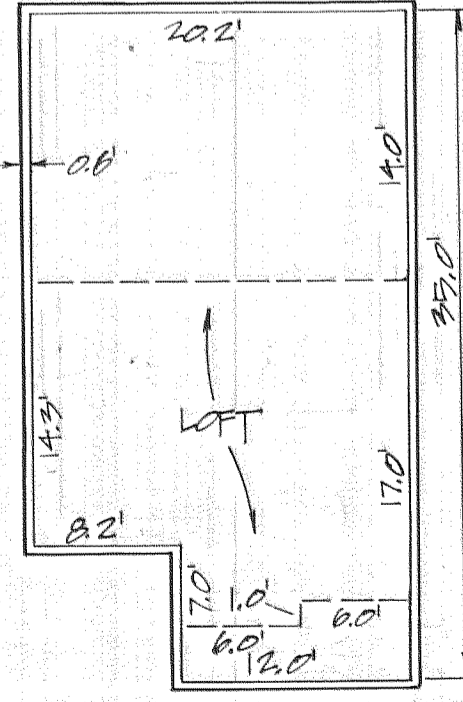
UNIT 107



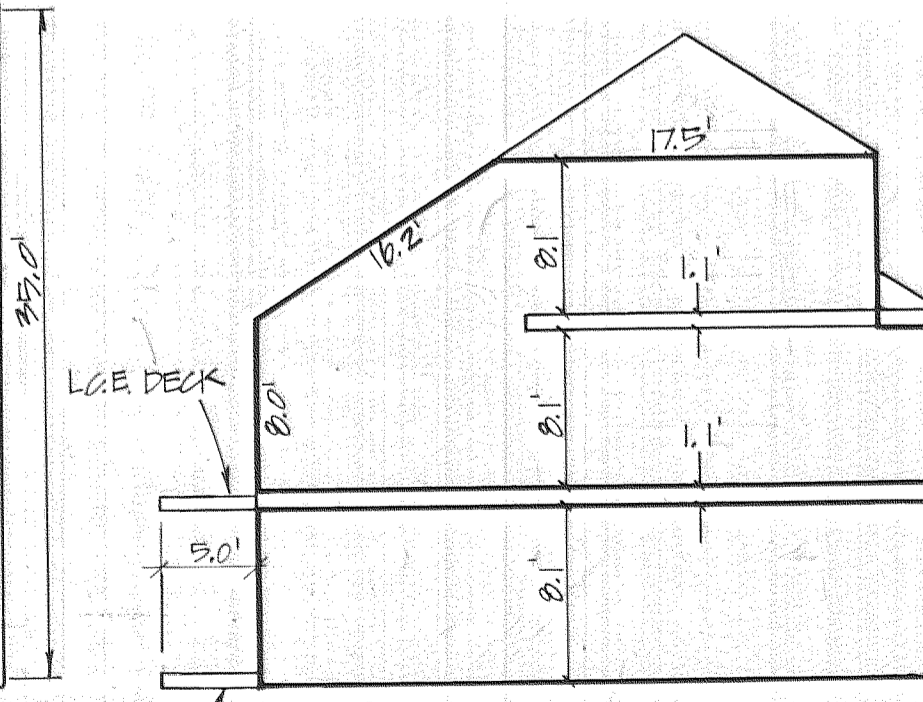
UNIT 108



UNIT 207



UNIT 208



TYPICAL ELEVATION VIEW

**GROUND FLOOR ELEVATIONS**

UNITS	ELEVATION
100 THRU 103	173.79
104 THRU 107	175.79
108 THRU 109	177.72
110 THRU 113	179.71
114 THRU 117	181.73

BENCH MARK - D.L.C. CORNER # 38, 8" X 8" IN STONE, ELEVATION 181.36 FEET, U.S.C. & G.S. DATUM, AS PER HOOD COUNTY SURVEYOR.

**GORSE VIEW CONDOMINIUMS**

LOCATED IN THE SE. 1/4 SECTION 26, T.3N., R.10E., W.M. CITY OF HOOD RIVER, HOOD RIVER COUNTY, OREGON DECEMBER, 1989

WILSEY & HAM PACIFIC  
1099 S.W. COLUMBIA ST.  
(503) 227-0455  
PROJ. NO. 4-373-0101

SCALE: 1" = 20'

SIDE 2 OF 2

**DECLARATION:**

KNOW ALL MEN BY THESE PRESENTS THAT GORSE DEVELOPMENT GROUP, INC., AN OREGON CORPORATION, DOES HEREBY MAKE, ESTABLISH AND DECLARE THE ANNEXED MAP TO BE A TRUE, AND CORRECT MAP OF THE LAND OWNED AND LAID OUT BY THEM AS THE GORSE VIEW CONDOMINIUMS. SAID LAND BEING MORE PARTICULARLY DESCRIBED IN THE SURVEYOR'S CERTIFICATE HERETO ANNEXED AND THEY DO HEREBY COMMIT SAID PROPERTY AND IMPROVEMENTS DESCRIBED AND DEPICTED ON THE PLAT ARE SUBJECT TO THE PROVISIONS OF ORES. 100.005 TO 100.625.

GORSE DEVELOPMENT GROUP, INC.

Jane Schmid-Cook  
JANE SCHMID-COOK - PRESIDENT  
Rodney R. Cook  
RODNEY R. COOK - VICE PRESIDENT

**ACKNOWLEDGEMENTS**

STATE OF OREGON  
COUNTY OF HOOD RIVER

BE IT REMEMBERED: THAT ON THIS 21<sup>st</sup> DAY OF December, 1989, BEFORE ME A NOTARY PUBLIC IN AND FOR SAID STATE AND COUNTY PERSONALLY APPEARED JANE SCHMID-COOK AND RODNEY R. COOK, WHO BEING FIRST DULY SWORN, UNDER OATH, DID SAY THAT THEY ARE PRESIDENT AND VICE PRESIDENT OF THE CORPORATION NAMED AND DESCRIBED IN THE FOREGOING INSTRUMENT AND THAT THEIR SIGNATURES AFFIXED TO SAID INSTRUMENT BY AUTHORITY OF ITS BOARD OF DIRECTORS ARE FREE ACT AND DEED OF SAID CORPORATION.

G. Robert Taylor  
NOTARY PUBLIC FOR STATE OF OREGON

MY COMMISSION EXPIRES 9-11-90

FILED FOR RECORD

THIS \_\_\_\_\_ DAY OF \_\_\_\_\_, 1989

HOOD RIVER COUNTY DIRECTOR OF RECORDS AND ASSESSMENTS

G. Robert Taylor  
G. ROBERT TAYLOR  
NOTARY PUBLIC - OREGON  
My Commission Expires 9-11-90