

HOOD RIVER COUNTY  
SURVEYOR'S OFFICE  
CS# **2009 018**  
DATE FILED: **5.13.09**  
BY: *Rory J. Holt*

**PLAT OF STAGE 3  
COLUMBIA CLIFF VILLAS, A CONDOMINIUM  
Supplemental Plat No. 2: Annexation of Stage 3**

A PORTION OF PARCEL 2 OF HOOD RIVER COUNTY PARTITION PLAT 2006-19P  
LOCATED IN THE SE 1/4 OF SECTION 27,  
TOWNSHIP 3 NORTH, RANGE 10 EAST, WILLAMETTE MERIDIAN,  
HOOD RIVER COUNTY, OREGON.

REGISTERED  
PROFESSIONAL  
LAND SURVEYOR  
*Erik M. Carlson*  
OREGON  
December 30, 2009  
ERIK M. CARLSON  
72306  
Expires: December, 2009

STAGE 2 OF COLUMBIA CLIFF VILLAS, A  
CONDOMINIUM  
AS RECORDED IN HOOD RIVER COUNTY  
RECORDERS OFFICE FILE #2008-01971  
DATED MAY 19, 2008

**SHEET INDEX:**

- SHEET 1: PLAT BOUNDARY, VILLA UNIT LOCATIONS, NARRATIVE.
- SHEET 2: FIRST FLOOR PLAN
- SHEET 3: SECOND FLOOR PLAN
- SHEET 4: THIRD FLOOR PLAN
- SHEET 5: BUILDING SECTION PLAN
- SHEET 6: SURVEYOR'S CERTIFICATE, DECLARATION AND ACKNOWLEDGMENT CERTIFICATE OF COMPLETION APPROVALS

**REFERENCES:**

- HOOD RIVER PARTITION PLAT NO. 2006-19P
- HOOD RIVER COUNTY SURVEY #99084
- HOOD RIVER COUNTY SURVEY #78093
- HOOD RIVER COUNTY SURVEY #78088
- HOOD RIVER COUNTY SURVEY #2008 004
- HOOD RIVER COUNTY SURVEY #2008 040

**NARRATIVE:**

THE PURPOSE OF THIS SURVEY IS TO CREATE STAGE 3 OF "COLUMBIA CLIFF VILLAS, A CONDOMINIUM". STAGE 3 CONTAINS 3 LIVING UNITS AND 1 SERVICE UNIT. SEE FACE OF PLAT FOR SPECIFIC DETAILS.

THE PROPERTY BOUNDARIES WERE HELD AS CREATED BY LS 59002 AN OREGON SURVEYOR. PARCELS 1 AND 2 ARE SHOWN ON HOOD RIVER COUNTY PARTITION PLAT NO. 2006-19P AS RECORDED ON JUNE 14, 2006.

MONUMENTS WHICH WERE LOST DURING CONSTRUCTION WERE REPLACED.

FOUND IRON ROD WITH CAP LS 59002.  
POINT WAS SET TO REFERENCE CORNER  
ON SOUTH R/W OF UNION PACIFIC  
RAILROAD

**EASEMENTS NOTED:**

HOOD RIVER COUNTY EASEMENT #811504 RIGHT OF WAY FOR PACIFIC POWER & LIGHT CO. THIS IS A GENERAL EASEMENT DESCRIBED AS "LYING SOUTH OF RIGHT OF WAY OF THE O.W.R. & N. R.R. AND NORTH OF THE RIGHT OF WAY LINE OF THE COLUMBIA RIVER HIGHWAY".

**NEW EASEMENTS NOTED:**

NOTE: SPECIFIC DETAILS OF EASEMENTS ARE FOUND ON RECORD DECLARATION IN HOOD RIVER COUNTY RECORDS NO. 2008-00249

**ARTICLE 7:**

- 7.1-GENERAL EASEMENT
- 7.2-ENCROACHMENTS
- 7.5-EASEMENTS FOR DECLARANT
- 7.7-RESERVATION OF EASEMENTS IN PARTITION PLAT AND BY SEPARATE RECORDED EASEMENT AGREEMENT.

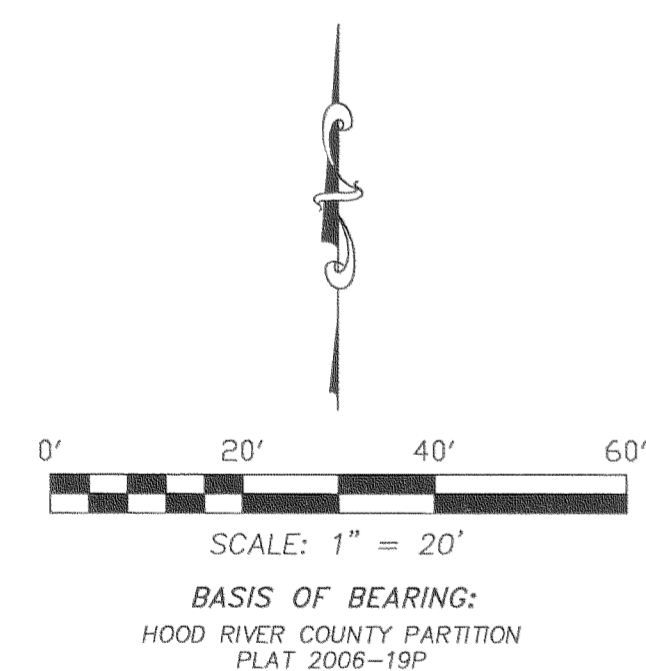
PARCEL 1  
PARTITION PLAT 2006-19P

PARCEL 2  
PARTITION PLAT 2006-19P

**TERRA SURVEYING**

DATE: MARCH 25, 2009  
DATE OF MONUMENTATION: 1/19/09  
SCALE: 1" = 20'  
PROJECT: 206025STG3  
ASSESSORS MAP: 3N 10E 27D  
P.O. BOX 617  
HOOD RIVER, OREGON 97031  
PHONE & FAX: (541) 386-4531  
E-Mail: terra@gorge.net

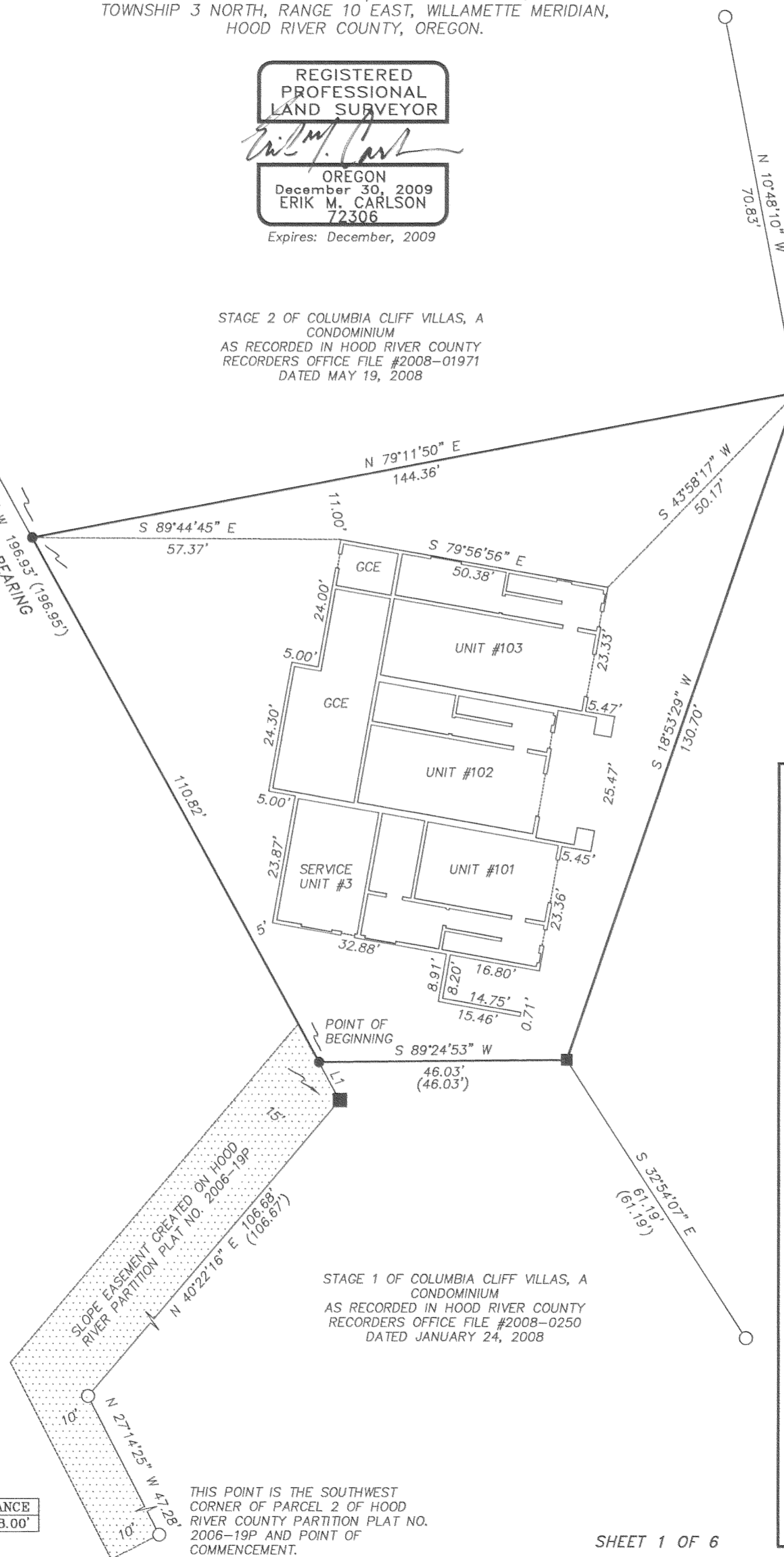
NOTE:  
As per O.R.S. 92.120(3) I, Erik M. Carlson,  
certify this plat to be an exact copy  
of the original plat recorded in the  
county recorders office.



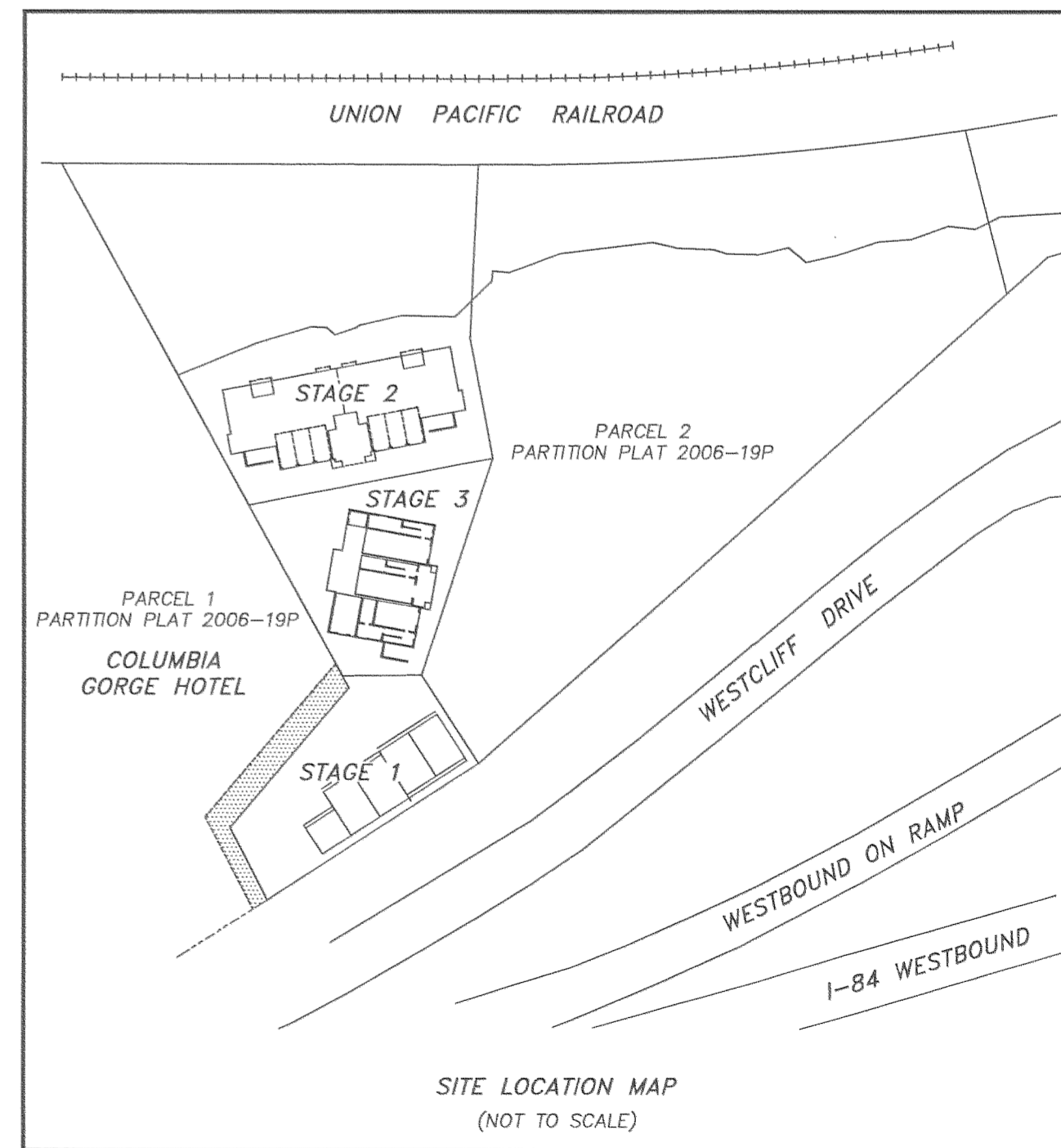
**LEGEND:**

- SET 5/8" X 30" IRON ROD WITH PLASTIC CAP
- ⊙ SET CONCRETE NAIL IN ROCK
- FOUND 5/8" IRON ROD OF RECORD, LS 72306, EXCEPT WHERE NOTED ON PLAT
- CALCULATED, NOT FOUND OR SET
- ( ) DEED OR PLAT CALL
- GCE = GENERAL COMMON ELEMENT

LINE	BEARING	DISTANCE
L1	N 28°50'26" W	8.00'



THIS POINT IS THE SOUTHWEST  
CORNER OF PARCEL 2 OF HOOD  
RIVER COUNTY PARTITION PLAT NO.  
2006-19P AND POINT OF  
COMMENCEMENT.



HOOD RIVER COUNTY  
SURVEYOR'S OFFICE

CS# 2009 018

DATE FILED: 5.13.09

BY: *Rory J. Holt*

PLAT OF STAGE 3  
COLUMBIA CLIFF VILLAS, A CONDOMINIUM  
Supplemental Plat No. 2: Annexation of Stage 3

A PORTION OF PARCEL 2 OF HOOD RIVER COUNTY PARTITION PLAT 2006-19P  
LOCATED IN THE SE 1/4 OF SECTION 27,  
TOWNSHIP 3 NORTH, RANGE 10 EAST, WILLAMETTE MERIDIAN,  
HOOD RIVER COUNTY, OREGON.

FOUND IRON ROD WITH CAP LS  
59002. POINT WAS SET TO  
REFERENCE CORNER ON SOUTH  
R/W OF UNION PACIFIC RAILROAD

SHEET INDEX:

SHEET 1: PLAT BOUNDARY, VILLA UNIT  
LOCATIONS, NARRATIVE.

SHEET 2: FIRST FLOOR PLAN

SHEET 3: SECOND FLOOR PLAN

SHEET 4: THIRD FLOOR PLAN

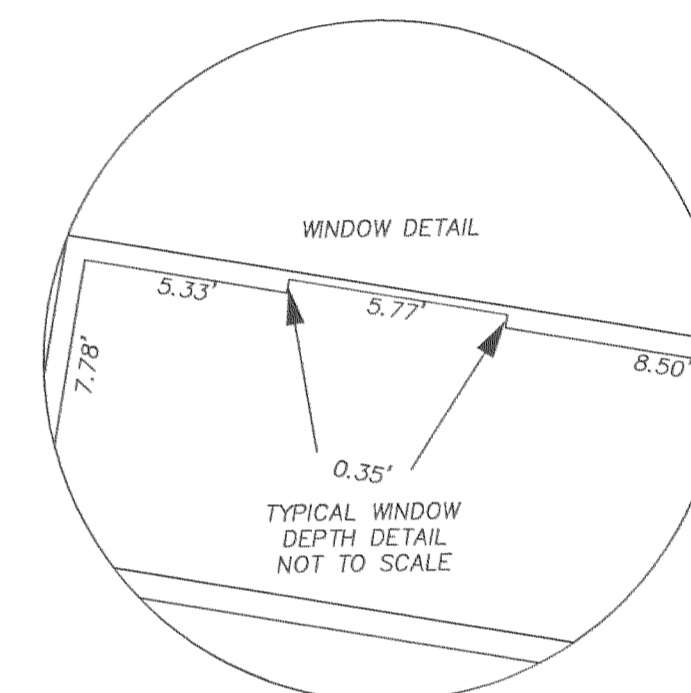
SHEET 5: BUILDING SECTION PLAN

SHEET 6: SURVEYOR'S CERTIFICATE, DECLARATION AND  
ACKNOWLEDGMENT CERTIFICATE OF COMPLETION  
APPROVALS

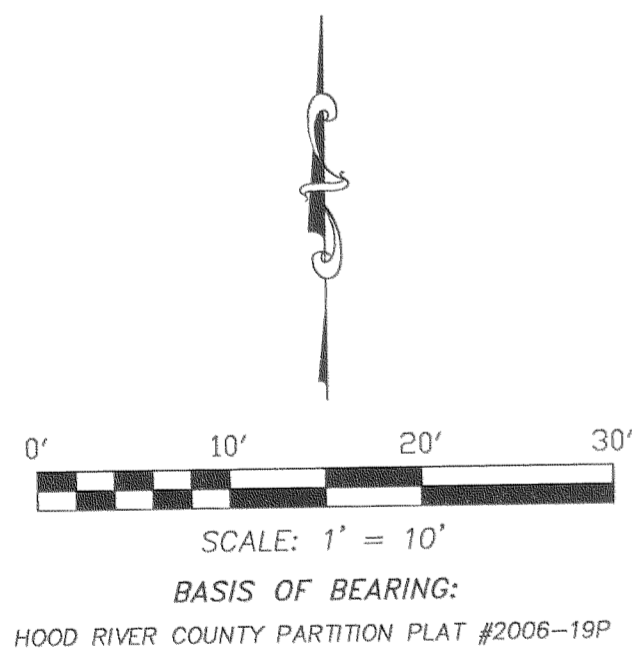
NOTE:  
WALLS ARE TYPICALLY 8" THICK, UNLESS NOTED.

NOTE:  
WALLS SHOWN ARE PARALLEL OR PERPENDICULAR  
TO BUILDING LINES, UNLESS NOTED.

NOTE:  
PARKING AREAS SHOWN  
ARE RESERVED FOR  
RESPECTIVE UNITS.  
DASHED LINE SHOWN  
ARE PERPENDICULAR  
TO BUILDING.



UNIT #	1 FLOOR	2 FLOOR	3 FLOOR	GARAGE AREA	TOTAL UNIT AREA
101	369 Sq.Ft., ±	1139 Sq.Ft., ±	1065 Sq.Ft., ±	356 Sq. Ft., ±	2,929 Sq. Ft., ±
102	235 Sq.Ft., ±	1108 Sq.Ft., ±	1065 Sq.Ft., ±	489 Sq. Ft., ±	2,897 Sq. Ft., ±
103	290 Sq.Ft., ±	1133 Sq.Ft., ±	1070 Sq.Ft., ±	550 Sq. Ft., ±	3,043 Sq. Ft., ±
SERVICE #3					349 Sq. Ft., ±



REGISTERED  
PROFESSIONAL  
LAND SURVEYOR

*Erik M. Carlson*

OREGON  
December 30, 2005  
ERIK M. CARLSON  
72306

Expires: December, 2009

TERRA SURVEYING

DATE: MARCH 25, 2009  
DATE OF MONUMENTATION: 1/19/09  
SCALE: 1" = 10'  
PROJECT: 206025STG3  
ASSESSORS MAP: 3N 10E 27D

P.O. BOX 617  
HOOD RIVER, OREGON 97031

PHONE & FAX: (541) 386-4531  
E-Mail: terra@gorge.net

NOTE:  
As per O.R.S. 92.120(3) I, Erik M.  
Carlson, certify this plat to be  
an exact copy of the original  
plat recorded in the county  
recorders office.

1st FLOOR  
SHEET 2 OF 6

- LEGEND:
- SET 5/8" X 30" IRON ROD WITH PLASTIC CAP
  - ⊙ SET CONCRETE NAIL IN ROCK
  - FOUND 5/8" IRON ROD OF RECORD, LS 72306, EXCEPT WHERE NOTED ON PLAT
  - CALCULATED, NOT FOUND OR SET
  - ( ) DEED OR PLAT CALL
  - GCE GENERAL COMMON ELEMENT
  - LCE-P# LIMITED COMMON ELEMENT PARKING SPACE

LINE	BEARING	DISTANCE
L1	N 28°50'26" W	8.00'

**PLAT OF STAGE 3**  
**COLUMBIA CLIFF VILLAS, A CONDOMINIUM**  
 Supplemental Plat No. 2: Annexation of Stage 3

A PORTION OF PARCEL 2 OF HOOD RIVER COUNTY PARTITION PLAT 2006-19P  
 LOCATED IN THE SE 1/4 OF SECTION 27,  
 TOWNSHIP 3 NORTH, RANGE 10 EAST, WILLAMETTE MERIDIAN,  
 HOOD RIVER COUNTY, OREGON.

HOOD RIVER COUNTY  
 SURVEYOR'S OFFICE

CS# **2009 018**

DATE FILED: **5.13.09**

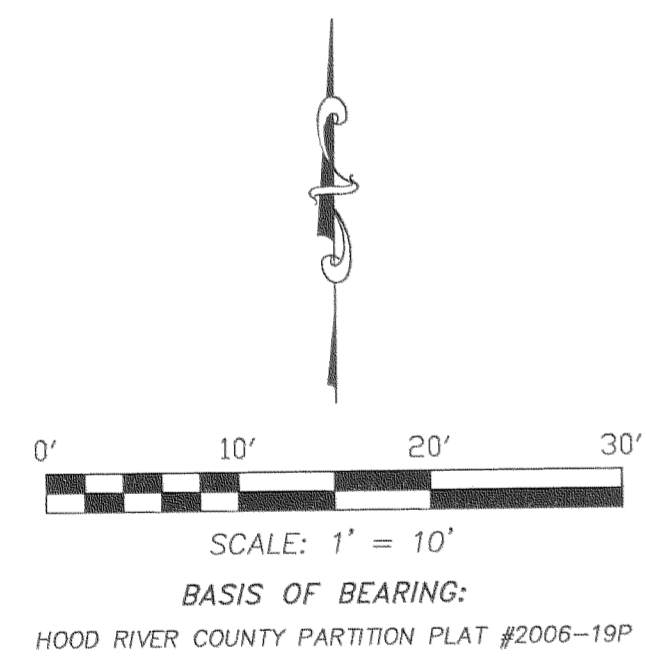
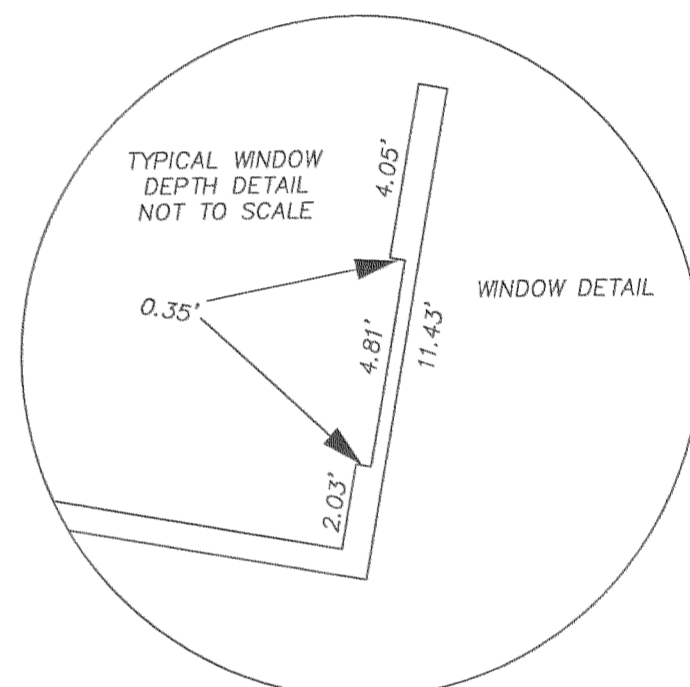
BY: *Randy J. Jants*

FOUND IRON ROD WITH CAP LS  
 59002. POINT WAS SET TO  
 REFERENCE CORNER ON SOUTH R/W  
 OF UNION PACIFIC RAILROAD

- SHEET INDEX:**
- SHEET 1: PLAT BOUNDARY, VILLA UNIT LOCATIONS, NARRATIVE.
  - SHEET 2: FIRST FLOOR PLAN
  - SHEET 3: SECOND FLOOR PLAN
  - SHEET 4: THIRD FLOOR PLAN
  - SHEET 5: BUILDING SECTION PLAN
  - SHEET 6: SURVEYOR'S CERTIFICATE, DECLARATION AND ACKNOWLEDGMENT CERTIFICATE OF COMPLETION APPROVALS

NOTE:  
 WALLS ARE TYPICALLY 8" THICK, UNLESS NOTED.

NOTE:  
 WALLS SHOWN ARE PARALLEL OR PERPENDICULAR  
 TO BUILDING LINES, UNLESS NOTED.



NOTE:  
 As per O.R.S. 92.120(3) I, Erik M. Carlson, certify this plat to be an exact copy of the original plat recorded in the county recorders office.

**REGISTERED  
 PROFESSIONAL  
 LAND SURVEYOR**

*Erik M. Carlson*

OREGON  
 December 30, 2005  
 ERIK M. CARLSON  
 72306

Expires: December, 2009

- LEGEND:**
- SET 5/8" X 30" IRON ROD WITH PLASTIC CAP
  - ⊙ SET CONCRETE NAIL IN ROCK
  - FOUND 5/8" IRON ROD OF RECORD, LS 72306, EXCEPT WHERE NOTED ON PLAT
  - CALCULATED, NOT FOUND OR SET
  - ( ) DEED OR PLAT CALL
  - GCE GENERAL COMMON ELEMENT
  - LCE-D LIMITED COMMON ELEMENT DECK
  - CF CORNER FIREPLACE

LINE	BEARING	DISTANCE
L1	N 28°50'26" W	8.00'

2nd FLOOR  
 SHEET 3 OF 6

**TERRA SURVEYING**

DATE: MARCH 25, 2009  
 DATE OF MONUMENTATION: 1/19/09  
 SCALE: 1" = 10'  
 PROJECT: 206025STG3  
 ASSESSORS MAP: 3N 10E 27D  
 P.O. BOX 617  
 HOOD RIVER, OREGON 97031  
 PHONE & FAX: (541) 386-4531  
 E-Mail: terra@gorge.net



# PLAT OF STAGE 3 COLUMBIA CLIFF VILLAS, A CONDOMINIUM Supplemental Plat No. 2: Annexation of Stage 3

A PORTION OF PARCEL 2 OF HOOD RIVER COUNTY PARTITION PLAT 2006-19P  
LOCATED IN THE SE 1/4 OF SECTION 27,  
TOWNSHIP 3 NORTH, RANGE 10 EAST, WILLAMETTE MERIDIAN,  
HOOD RIVER COUNTY, OREGON.

FOUND IRON ROD WITH CAP LS 59002.  
POINT WAS SET TO REFERENCE CORNER  
ON SOUTH R/W OF UNION PACIFIC  
RAILROAD

78.11'  
N 28°50'26" W 196.93' (196.95')  
BASIS OF BEARING

S 79°11'50" W  
144.36'

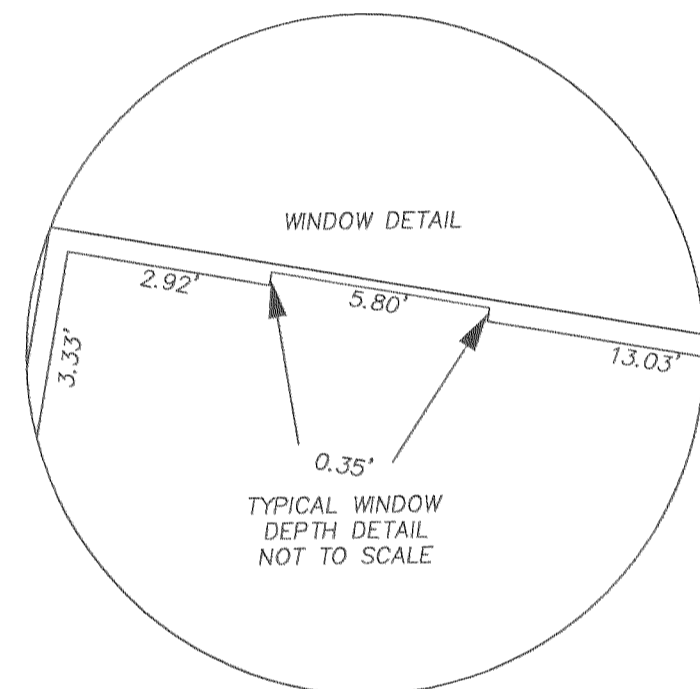
S 10°48'10" E  
70.83'

NOTE:  
WALLS ARE TYPICALLY 8" THICK, UNLESS NOTED.

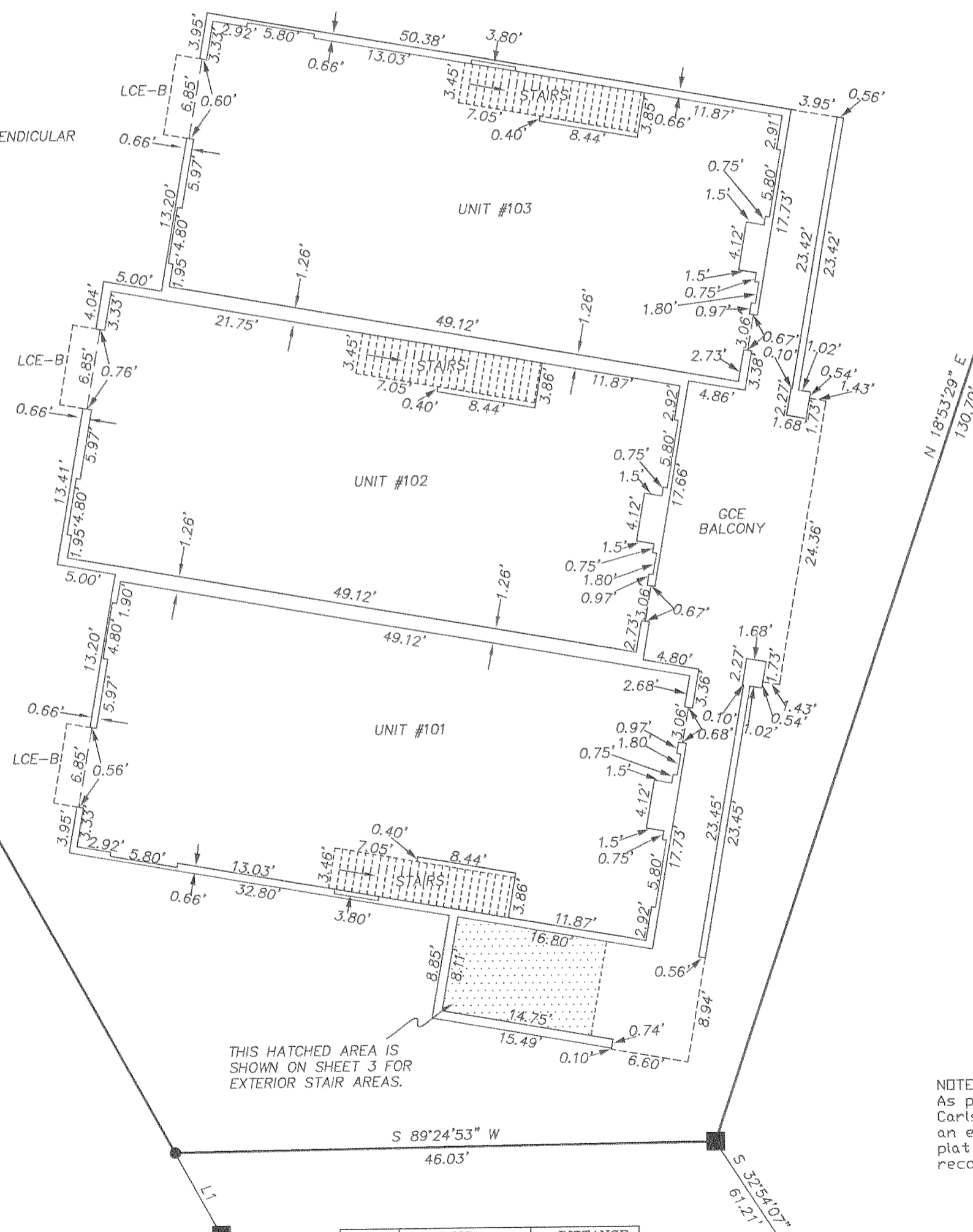
NOTE:  
WALLS SHOWN ARE PARALLEL OR PERPENDICULAR  
TO BUILDING LINES, UNLESS NOTED.

### SHEET INDEX:

- SHEET 1: PLAT BOUNDARY, VILLA UNIT LOCATIONS, NARRATIVE.
- SHEET 2: FIRST FLOOR PLAN
- SHEET 3: SECOND FLOOR PLAN
- SHEET 4: THIRD FLOOR PLAN
- SHEET 5: BUILDING SECTION PLAN
- SHEET 6: SURVEYOR'S CERTIFICATE, DECLARATION AND ACKNOWLEDGMENT CERTIFICATE OF COMPLETION APPROVALS



SCALE: 1" = 10'  
BASIS OF BEARING:  
HOOD RIVER COUNTY PARTITION PLAT #2006-19P



THIS HATCHED AREA IS SHOWN ON SHEET 3 FOR EXTERIOR STAIR AREAS.

NOTE:  
As per O.R.S. 92.120(3) I, Erik M. Carlson, certify this plat to be an exact copy of the original plat recorded in the county recorders office.

LINE	BEARING	DISTANCE
L1	N 28°50'26" W	8.00'

3rd FLOOR  
SHEET 4 OF 6

### LEGEND:

- SET 5/8" X 30" IRON ROD WITH PLASTIC CAP
- ⊙ SET CONCRETE NAIL IN ROCK
- FOUND 5/8" IRON ROD OF RECORD, LS 72306, EXCEPT WHERE NOTED ON PLAT
- CALCULATED, NOT FOUND OR SET
- ( ) DEED OR PLAT CALL
- GCE GENERAL COMMON ELEMENT
- LCE-B LIMITED COMMON ELEMENT BALCONY (2'X7')

REGISTERED PROFESSIONAL LAND SURVEYOR

*Erik M. Carlson*  
OREGON  
December 30, 2005  
ERIK M. CARLSON  
72306

Expires: December, 2009

TERRA SURVEYING

DATE: MARCH 25, 2009  
DATE OF MONUMENTATION: 1/19/09  
SCALE: 1" = 10'  
PROJECT: 206025TG3  
ASSESSORS MAP: 3N 10E 27D

P.O. BOX 617  
HOOD RIVER, OREGON 97031  
PHONE & FAX: (541) 386-4531  
E-Mail: terra@gorge.net

20091555

**LEGEND:**

GCE GENERAL COMMON ELEMENT  
TYP TYPICAL MEASUREMENT

NOTE:  
WALLS SHOWN ARE PARALLEL OR PERPENDICULAR  
TO BUILDING LINES, UNLESS NOTED.

**PLAT OF STAGE 3  
COLUMBIA CLIFF VILLAS, A CONDOMINIUM  
Supplemental Plat No. 2: Annexation of Stage 3**

A PORTION OF PARCEL 2 OF HOOD RIVER COUNTY PARTITION PLAT 2006-19P  
LOCATED IN THE SE 1/4 OF SECTION 27,  
TOWNSHIP 3 NORTH, RANGE 10 EAST, WILLAMETTE MERIDIAN,  
HOOD RIVER COUNTY, OREGON.

HOOD RIVER COUNTY  
SURVEYOR'S OFFICE  
CS# 2009 018  
DATE FILED: 5.13.09  
BY: *Randy Gorge*

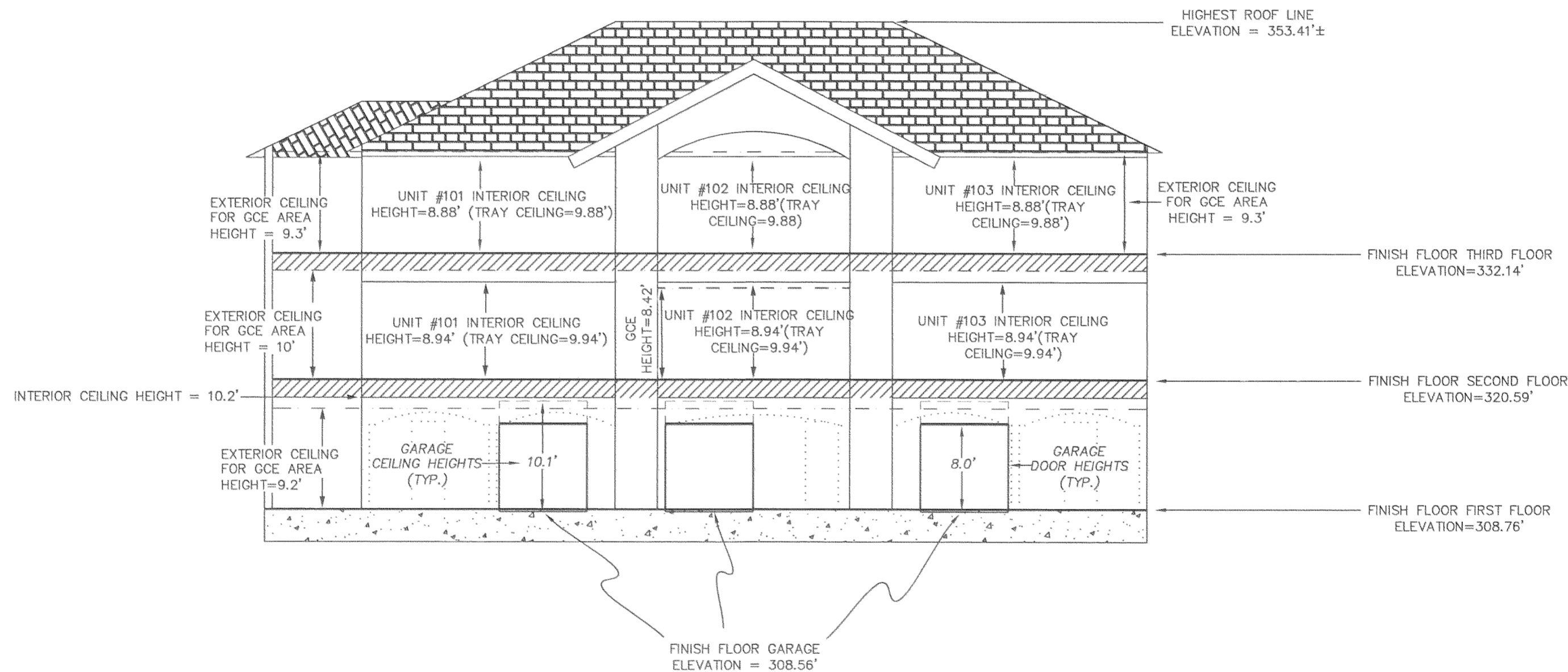
REGISTERED  
PROFESSIONAL  
LAND SURVEYOR

*Erik M. Carlson*  
OREGON  
December 30, 2005  
ERIK M. CARLSON  
72306

Expires: December, 2009

**SHEET INDEX:**

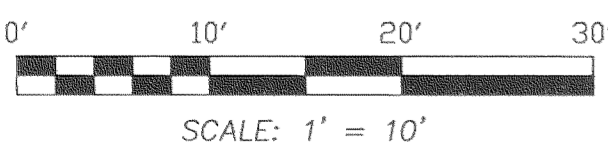
- SHEET 1: PLAT BOUNDARY, VILLA UNIT LOCATIONS, NARRATIVE.
- SHEET 2: FIRST FLOOR PLAN
- SHEET 3: SECOND FLOOR PLAN
- SHEET 4: THIRD FLOOR PLAN
- SHEET 5: BUILDING SECTION PLAN
- SHEET 6: SURVEYOR'S CERTIFICATE, DECLARATION AND ACKNOWLEDGMENT CERTIFICATE OF COMPLETION APPROVALS



ELEVATED VIEW: LOOKING WEST

**VERTICAL DATUM:**

U.S.G.S. STATION PONDER-2  
N.A.D. 1983 (1998 ADJUSTMENT)  
LATITUDE = 45°42'39.37105" (N)  
LONGITUDE = 121°32'59.76083" (W)  
ORTHOMETRIC HEIGHT OF 102.638 METERS  
(336.74')  
N.A.V.D. 1988 USING THE 1999 GEOID FOR  
THE U.S.



NOTE:  
As per O.R.S. 92.120(3) J, Erik M. Carlson,  
certify this plat to be an exact copy  
of the original plat recorded in the  
county recorders office.

**TERRA SURVEYING**

DATE: MARCH 25, 2009  
DATE OF MONUMENTATION: 1/19/09  
SCALE: 1" = 10'  
PROJECT: 206025STG3  
ASSESSORS MAP: 3N 10E 27D

P.O. BOX 617  
HOOD RIVER, OREGON 97031

PHONE & FAX: (541) 386-4531

E-Mail: terra@gorge.net

BUILDING SECTION PLAN  
SHEET 5 OF 6

CS 2009 018-5

PLAT OF STAGE 3  
COLUMBIA CLIFF VILLAS, A CONDOMINIUM,  
Supplemental Plat No. 2: Annexation of Stage 3

A PORTION OF PARCEL 2 OF HOOD RIVER COUNTY PARTITION  
PLAT 2006-19P  
LOCATED IN THE SE 1/4 OF SECTION 27,  
TOWNSHIP 3 NORTH, RANGE 10 EAST, WILLAMETTE MERIDIAN,  
HOOD RIVER COUNTY, OREGON.

HOOD RIVER COUNTY  
SURVEYOR'S OFFICE  
CS# 2009 018  
DATE FILED: 5.13.09  
BY: [Signature]

SURVEYOR'S CERTIFICATE:

I, ERIK M. CARLSON, CERTIFY THAT I HAVE CORRECTLY SURVEYED AND MARKED WITH PROPER MONUMENTS THE LAND REPRESENTED AS STAGE 3 ON THE PLAT OF "COLUMBIA CLIFF VILLAS, A CONDOMINIUM", SAID LAND BEING DESCRIBED AS FOLLOWS:

COMMENCING AT THE SOUTHWEST CORNER OF PARCEL 2 OF HOOD RIVER COUNTY PARTITION PLAT NO. 2006-19P, LOCATED IN THE SOUTHEAST QUARTER OF SECTION 27, TOWNSHIP 3 NORTH, RANGE 10 EAST OF THE WILLAMETTE MERIDIAN, HOOD RIVER COUNTY AND STATE OF OREGON AS RECORDED IN HOOD RIVER COUNTY RECORDS; THENCE N(NORTH) 27°14'25"W(WEST) A DISTANCE OF 47.28 FEET TO A 5/8" IRON ROD WITH CAP MARKED L.S. 72306; THENCE N 40°22'16" E(EAST) A DISTANCE OF 106.68 FEET TO A 5/8" IRON ROD WITH CAP MARKED L.S. 72306; THENCE N 28°50'26" W A DISTANCE OF 8.00 FEET TO THE POINT OF BEGINNING OF THIS DESCRIPTION. THENCE CONTINUING N 28°50'26" W A DISTANCE OF 110.82 FEET TO A 5/8" IRON ROD WITH CAP MARKED L.S. 72306; THENCE N 79°11'50" E A DISTANCE OF 144.36 FEET TO A 5/8" IRON ROD WITH CAP MARKED L.S. 72306; THENCE S 18°53'29" W A DISTANCE OF 130.70 FEET; THENCE S 89°24'53" W A DISTANCE OF 46.03 FEET TO THE POINT OF BEGINNING.

CONTAINS 0.24 ACRES, MORE OR LESS.

REGISTERED  
PROFESSIONAL  
LAND SURVEYOR  
Erik M. Carlson  
OREGON  
December 30, 2005  
ERIK M. CARLSON  
72306  
Expires: December, 2009

NOTES:  
As per O.R.S. 92.120(3) I, Erik M. Carlson, certify this plat to be an exact copy of the original plat recorded in the county recorders office.

APPROVALS:

THE PLAT OF "COLUMBIA CLIFF VILLAS, A CONDOMINIUM, STAGE 3" WAS EXAMINED AND APPROVED BY ME THIS 26<sup>th</sup> DAY, OF MARCH, 2009  
David M. Bass  
CITY OF HOOD RIVER ENGINEER

THE PLAT OF "COLUMBIA CLIFF VILLAS, A CONDOMINIUM, STAGE 3" WAS EXAMINED AND APPROVED BY ME THIS 26<sup>th</sup> DAY, OF MARCH, 2009  
Paul Larson  
THE CITY OF HOOD RIVER PLANNER

THE PLAT OF "COLUMBIA CLIFF VILLAS, A CONDOMINIUM, STAGE 3" WAS EXAMINED AND APPROVED BY ME THIS 25<sup>th</sup> DAY, OF MARCH, 2009  
Dean B. Swen  
HOOD RIVER COUNTY DIRECTOR OF PUBLIC WORKS

THE PLAT OF "COLUMBIA CLIFF VILLAS, A CONDOMINIUM, STAGE 3" WAS EXAMINED AND APPROVED BY ME THIS 25<sup>th</sup> DAY, OF MARCH, 2009  
Erik M. Carlson  
HOOD RIVER COUNTY SURVEYOR

THE PLAT OF "COLUMBIA CLIFF VILLAS, A CONDOMINIUM, STAGE 3" WAS EXAMINED AND APPROVED BY ME THIS 21 DAY, OF APRIL, 2009  
[Signature]  
HOOD RIVER COUNTY RECORDER

THE PLAT OF "COLUMBIA CLIFF VILLAS, A CONDOMINIUM, STAGE 3" WAS EXAMINED AND APPROVED BY ME THIS 31<sup>st</sup> DAY, OF MARCH, 2009  
Mal T. Ben  
ICE FOUNTAIN WATER DISTRICT

THE PLAT OF "COLUMBIA CLIFF VILLAS, A CONDOMINIUM, STAGE 3" WAS EXAMINED AND APPROVED BY ME THIS 30<sup>th</sup> DAY, OF MARCH, 2009  
[Signature]  
HOOD RIVER FIRE MARSHALL

THE PLAT OF "COLUMBIA CLIFF VILLAS, A CONDOMINIUM, STAGE 3" WAS EXAMINED AND APPROVED BY ME THIS 1<sup>st</sup> DAY, OF APRIL, 2009  
Rick Brock  
FARMERS IRRIGATION DISTRICT

THE DIRECTOR OF RECORDS AND ASSESSMENTS AND THE DIRECTOR OF BUDGET, FINANCE AND TAX COLLECTOR, RESPECTIVELY, OF HOOD RIVER COUNTY, OREGON, HEREBY CERTIFY THAT WE HAVE EXAMINED THE PLAT OF "COLUMBIA CLIFF VILLAS, A CONDOMINIUM, STAGE 3", IN THE COUNTY OF HOOD RIVER AND THE NAME ADOPTED FOR SAID PLAT IS A PROPER NAME AND NOT INCLUDED IN ANY OTHER CONDOMINIUM IN HOOD RIVER COUNTY, AND FURTHER CERTIFY THAT ALL ASSESSMENTS DUE HERON HAVE BEEN FULLY PAID AS REQUIRED BY LAW AND WE HEREBY APPROVE SAID PLAT.

Sandra E. Berry  
HOOD RIVER COUNTY DIRECTOR OF RECORDS AND ASSESSMENTS  
[Signature]  
HOOD RIVER COUNTY DIRECTOR OF BUDGET FINANCE & TAX COLLECTOR

FILED FOR RECORD THIS 21<sup>st</sup> DAY OF APRIL, 2009  
Sandra E. Berry  
HOOD RIVER COUNTY DIRECTOR OF RECORDS AND ASSESSMENTS

CERTIFICATE OF COMPLETION:

I, ERIK M. CARLSON, A REGISTERED PROFESSIONAL LAND SURVEYOR, DOES HEREBY CERTIFY THAT THE PLAT OF "COLUMBIA CLIFF VILLAS, A CONDOMINIUM, STAGE 3" FULLY AND ACCURATELY DEPICTS THE BOUNDARIES OF THE UNITS AND OF THE BUILDINGS, AND THAT CONSTRUCTION OF THE UNITS AND BUILDINGS, AS DEPICTED ON SUCH PLAT, HAS BEEN COMPLETED.

DATED THIS 25<sup>th</sup> DAY OF March, 2009  
Erik M. Carlson  
ERIK M. CARLSON  
REGISTERED PROFESSIONAL LAND SURVEYOR, LS 72306

ACKNOWLEDGMENT:

STATE OF OREGON )  
                          )SS.  
COUNTY OF HOOD RIVER )

THIS IS TO CERTIFY THAT ON THIS 25<sup>th</sup> DAY OF March, 2009 BEFORE ME A NOTARY PUBLIC IN AND FOR SAID STATE AND COUNTY, PERSONALLY APPEARED STEVE TESSMER, WHO DID SAY THAT HE IS THE IDENTICAL PERSON NAMED IN THE FOREGOING INSTRUMENT, AND THAT SAID INSTRUMENT WAS EXECUTED AS A REPRESENTATIVE OF AERIE DEVELOPMENT, LLC, AND THAT HE EXECUTED SAID INSTRUMENT FREELY AND VOLUNTARILY.

Marilyn J. Carlson  
NOTARY SIGNATURE  
411534 Nancy J. Carlson  
NOTARY PUBLIC-OREGON

COMMISSION NO. 411534  
MY COMMISSION EXPIRES NOV. 2, 2010

DECLARATION:

KNOW ALL PEOPLE BY THESE PRESENT THAT AERIE DEVELOPMENT, LLC, AN OREGON LIMITED LIABILITY COMPANY, HEREBY DECLARES THAT THE SUPPLEMENTAL PLAT NO. 2 OF "COLUMBIA CLIFF VILLAS, A CONDOMINIUM, STAGE 3", AS DESCRIBED IN THE ACCOMPANYING SURVEYOR'S CERTIFICATE, TO BE A TRUE AND CORRECT MAP AND PLAT THEREOF, AND HEREBY COMMITS SAID LAND TO THE OPERATION AND PROVISIONS OF THE OREGON CONDOMINIUM ACT. THE PROPERTY AND IMPROVEMENTS DEPICTED ON THE PLAT ARE SUBJECT TO THE PROVISIONS OF OREGON REVISED STATUTES 100.005 TO 100.625.

AERIE DEVELOPMENT, LLC, AN OREGON LIMITED LIABILITY COMPANY

BY: [Signature]  
STEVE TESSMER, MANAGING MEMBER

THE SUPPLEMENTAL DECLARATION OF COLUMBIA CLIFF VILLAS RECORDED IN HOOD RIVER COUNTY RECORDS DOCUMENT NO. 2009 1554

Certified to be a true and correct copy of the ORIGINAL  
Dept. of Records & Assessment  
By L. Klay Deputy

SHEET INDEX:

- SHEET 1: PLAT BOUNDARY, VILLA UNIT LOCATIONS, NARRATIVE.
- SHEET 2: FIRST FLOOR PLAN
- SHEET 3: SECOND FLOOR PLAN
- SHEET 4: THIRD FLOOR PLAN
- SHEET 5: BUILDING SECTION PLAN
- SHEET 6: SURVEYOR'S CERTIFICATE, DECLARATION AND ACKNOWLEDGMENT CERTIFICATE OF COMPLETION APPROVALS

TERRA SURVEYING

DATE: MARCH 25, 2009  
DATE OF MONUMENTATION: 1/19/09  
SCALE: 1" = 40'  
PROJECT: 206025STG3  
ASSESSORS MAP: 3N 10E 27D  
P.O. BOX 617  
HOOD RIVER, OREGON 97031  
PHONE & FAX: (541) 386-4531  
E-Mail: terra@gorge.net