

(TYPE) _____

STATE WASHINGTON
 COUNTY SKAMANIA
 DIVISION NORTH PACIFIC
 DISTRICT PORTLAND
 SIXTH ARMY AREA _____

— LOCATION OF PROJECT _____
 MILES OF _____
 MILES OF _____

— TRANSPORTATION FACILITIES _____
 RAILROADS _____
 STATE ROADS _____
 FEDERAL ROADS _____
 AIRLINES _____

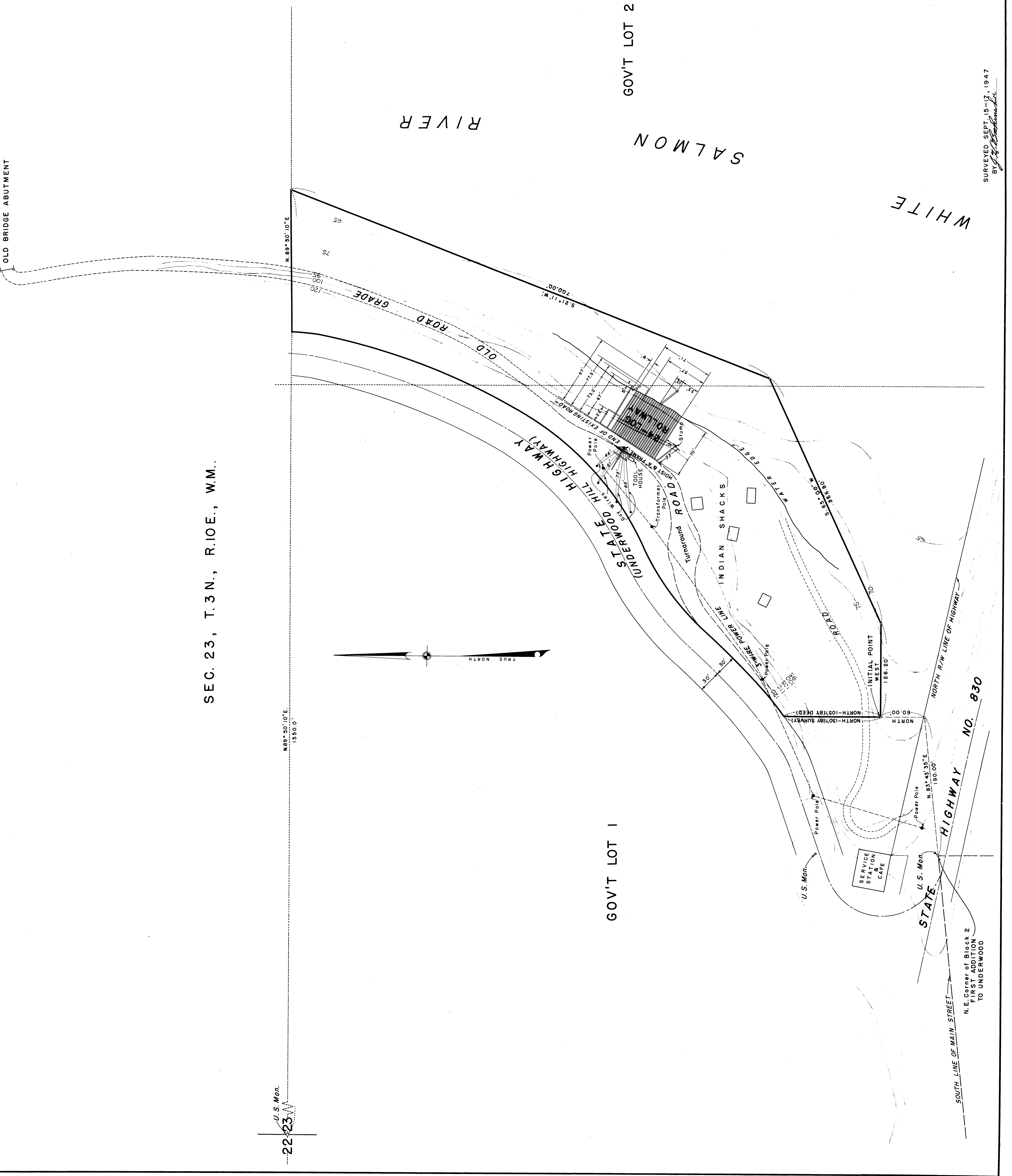
— ACQUISITION —
 TOTAL ACRES ACQUIRED _____
 ACRES FEE _____
 ACRES TRANSF'D TO WAR DEPT. _____
 ACRES LEAS'D TO WAR DEPT. _____
 ACRES LESSER INTERESTS _____

— DISPOSAL —
 TOTAL ACRES DISPOSED OF _____
 ACRES SOLD BY WAR DEPT. _____
 ACRES TRANSF'D BY WAR DEPT. _____
 ACRES RETRANSF'D TO GOV'T. AGCY. _____
 ACRES LEASES TERMINATED _____
 ACRES LESSER INT'S. TERM. _____

— LEGEND —
 NOTE: USE SYMBOLS FROM FM-21-30 (DEPT. BASIC FIELD MANUAL) PAGES 21 TO 24

RESERVATION LINE (ACTUAL SURVEY) _____
 DAM SITE (FRANKS LINE) _____
 RESERVOIR SITE (FRANKS LINE) _____
 CONTOUR LINES _____
 AVIGATION EASEMENTS _____
 TRACT NUMBER _____

EXCEPT _____



SEC. 23, T.3 N., R.10 E., W.M.

REVISIONS	DATE

WAR DEPARTMENT
 OFFICE OF THE DISTRICT ENGINEER
 PORTLAND OREGON DISTRICT

REAL ESTATE
BONNEVILLE DAM
 MAP SHOWING LAND ACQUIRED FROM
 NORTHWESTERN ELECTRIC POWER COMPANY
 NEAR UNDERWOOD, WASHINGTON
 (PART OF TRACT WK-40)

APPROVED BY: *[Signature]* DATE: Oct. 15, 1947
 DISTRICT ENGINEER
 OFFICE, CHIEF OF ENGINEERS, WASHINGTON, D.C.

DRAWN BY: V. J. G.
 CHECKED BY: R. E. W.
 SUBMITTED BY: *[Signature]*
 CHIEF, CADASTRAL SEC.
 RECOMMENDED BY: *[Signature]*
 CHIEF, REAL ESTATE DIV.

SCALE IN FEET
 0 50 100

INSTALLATION OR PROJECT NO. _____ SHEET OF _____ DWG. NO. 0-17

SURVEYED SEPT. 15-17, 1947
 BY *[Signature]*