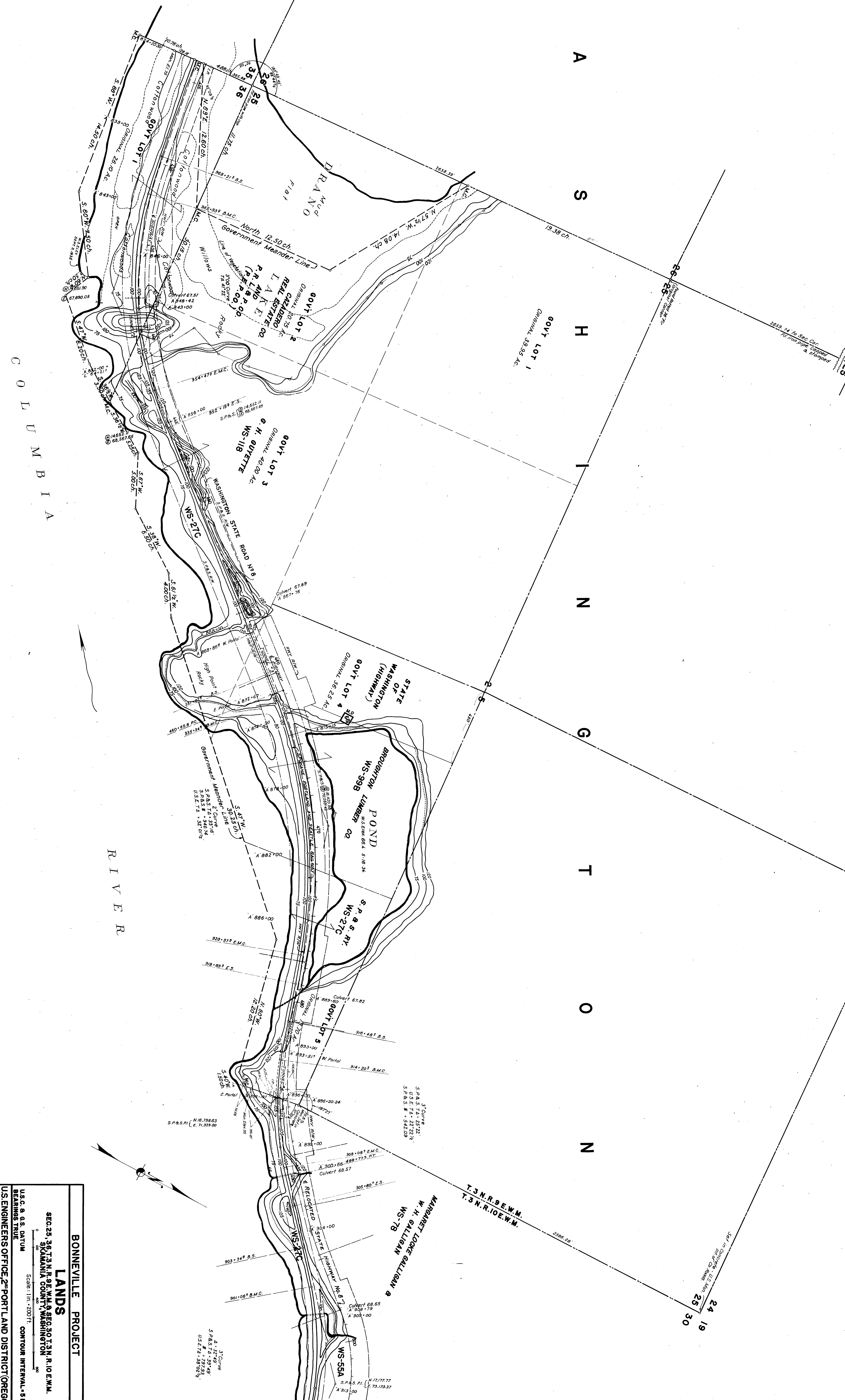


W A S H I N G T O N



23
24
26
25

24
19
25
30

C O L U M B I A
R I V E R

**BONNEVILLE PROJECT
LANDS**

SEC. 25, 36, T. 3 N., R. 9 E., W. 1 & 2, SEC. 30, T. 3 N., R. 10 E., W. 1 & 2, WASHINGTON COUNTY, OREGON

U.S. ENGINEERS OFFICE, PORTLAND DISTRICT, OREGON

Scale: 1 in. = 200 ft.
CONTOUR INTERVAL - 5 FT.
Approved: *[Signature]*
Dec 19 1935.
RECOMMENDED BY: *[Signature]*
LIEUTENANT COLONEL, CORPS OF ENGINEERS

R. O-17-II W.S.