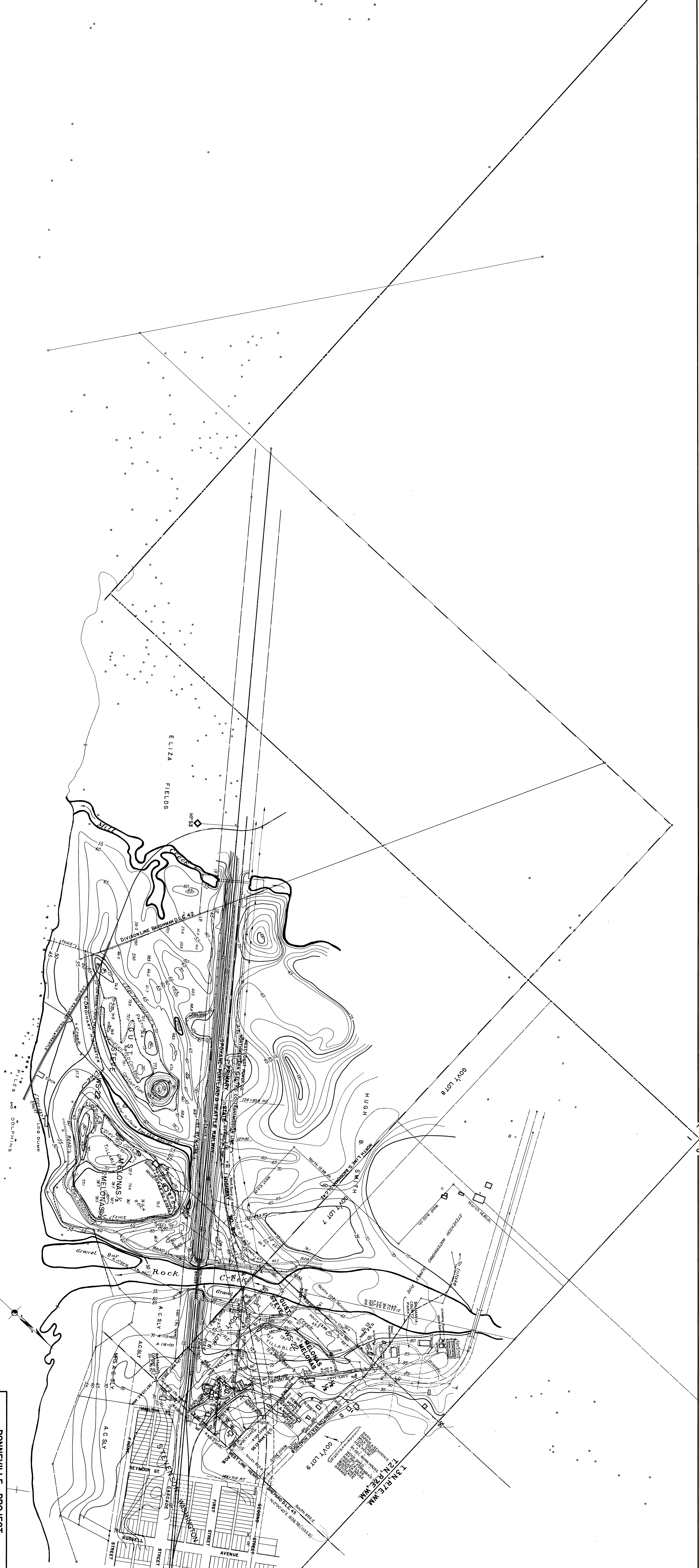


C  
O  
L  
U  
M  
B  
I  
A  
R  
I  
V  
E  
R



**BONNEVILLE PROJECT  
LANDS**

SECS. 12 & 13, T24N, R72E, W4M & SEC. 36, T24N, R72E, W4M.  
SKAMANIA COUNTY, WASHINGTON

U.S. COAST AND GEOD. SURVEY  
U.S. ENGINEER OFFICE, 2nd PORTLAND DISTRICT (OREGON)  
SUBMITTED *W. B. Williams* APPROVED *W. B. Williams* JULY 29, 1937

RECOMMENDED BY *W. B. Williams*  
ENGINEER  
MAJOR CORPS OF ENGINEERS

R 0-17-3 1/2 WS