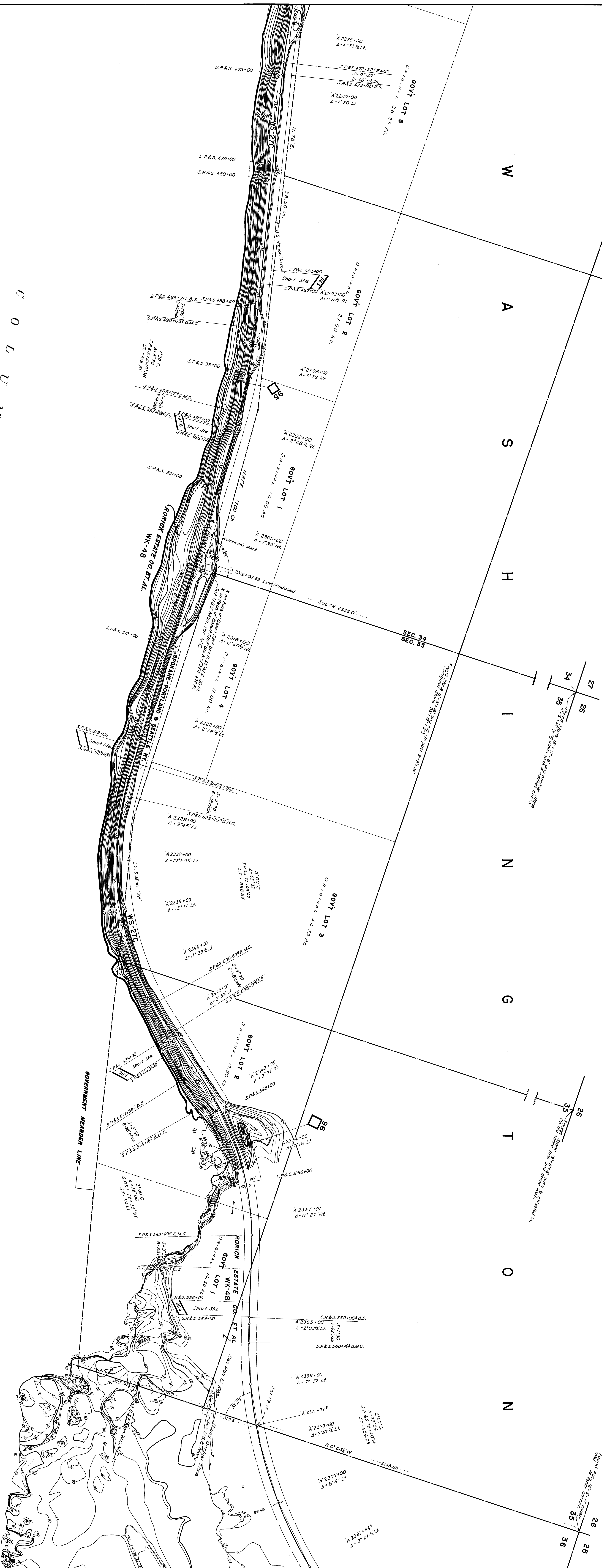


C O L U M B I A

R I V E R



BONNEVILLE SECTION
LANDS
 SEC. 34 & 35 T.2N. R.13E. W.M.
 KLICKITAT COUNTY, WASHINGTON

U.S.C. & G.S. DATUM
 SCALE-1"=200' FT. CONTOUR INTERVAL, 5 FT.
 BEARINGS TRUE

U.S. ENGINEERS OFFICE, 2ND PORTLAND DIST. (REGON)
 SUBMITTED: *W. H. Williams*
 SENIOR LAND APPRAISER
 RECOMMENDED: *W. H. Williams*
 JUNIOR ENGINEER

LT. COL. CORPS OF ENGINEERS

R. 0-16-14 WK