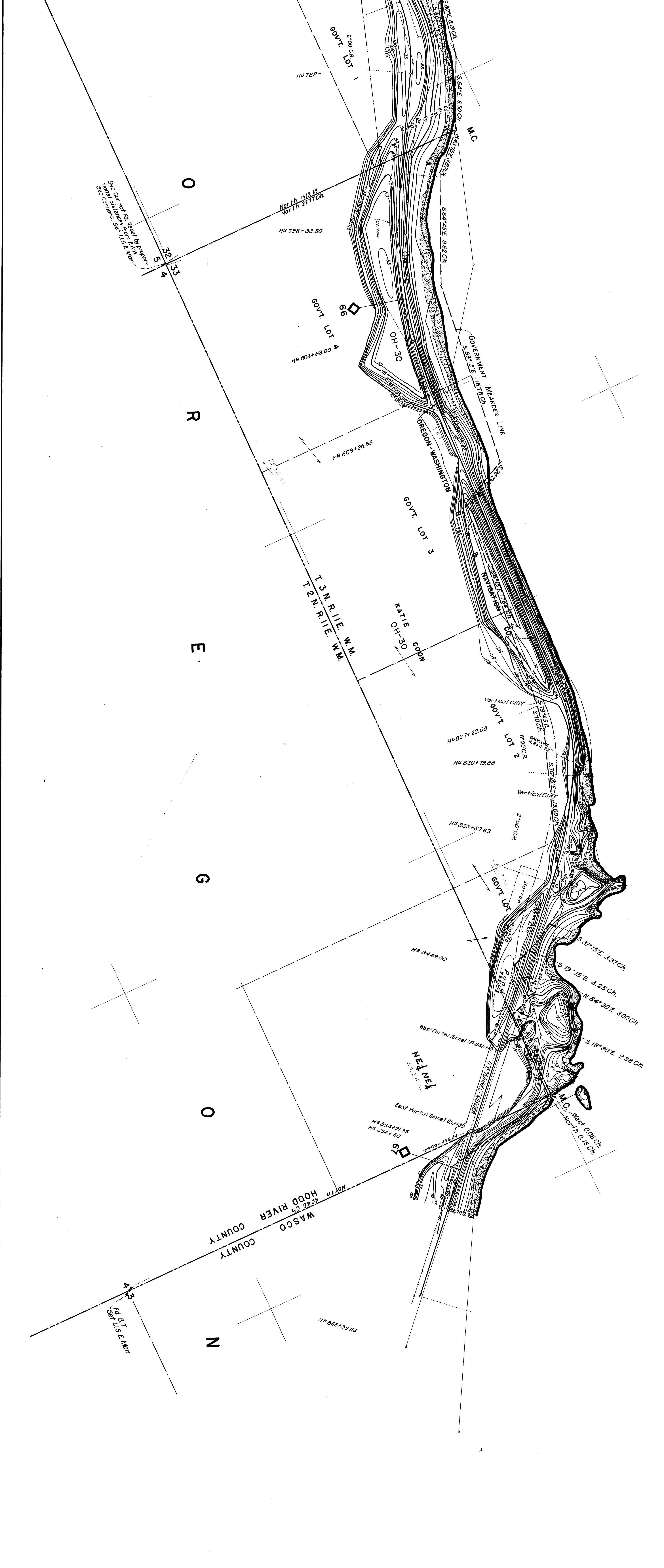


C O L U M B I A R I V E R



Spec. Cont. and 1st. Rept. by Proj. Engr. E. W. Moore  
 Hoop. Cont. and 1st. Rept. by Proj. Engr. E. W. Moore  
 Hoop. Cont. and 1st. Rept. by Proj. Engr. E. W. Moore

**BONNEVILLE PROJECT**  
**LANDS**  
 SEC. 33 T.N. R.I.E. SECS. 8 & 12 N. R.I.E. W.M.  
 HOOD RIVER & WASCO COUNTIES, ORE.  
 U.S.C. & G.S. DATUM  
 BEARINGS TRUE  
 SCALE 1 IN. = 80 FT. CONTOUR INTERVAL 5 FT.  
 U.S. ENGINEERS OFFICE, 2<sup>ND</sup> PORTLAND DISTRICT (OREGON)

Submitted: *[Signature]*  
 Senior Land Engineer  
 Recommended: *[Signature]*  
 Principal Engineer  
 Approved: *[Signature]*  
 April 27, 1936  
 Lt. Col. Corps of Engineers  
**R 0-7-14 OHR**