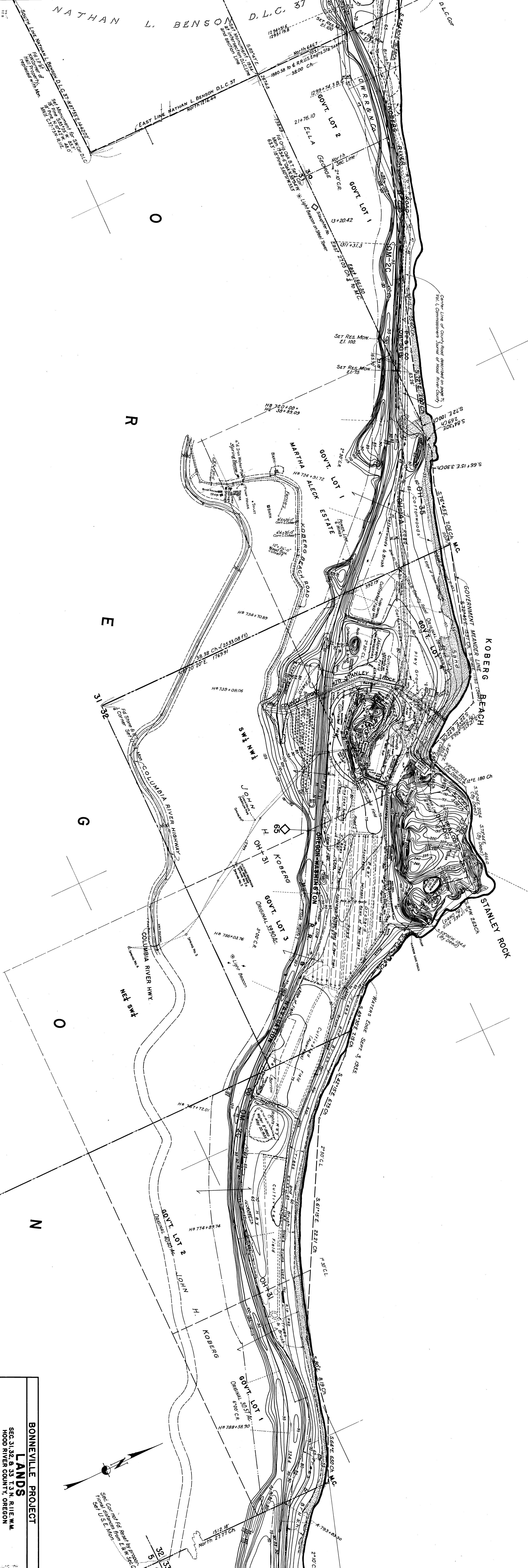


C O L U M B I A  
R I V E R



NATHAN L. BENSON D.L.C. 37  
 EAST LINE NATHAN L. BENSON D.L.C. 37  
 SOUTH LINE NATHAN L. BENSON D.L.C. 37  
 NORTH LINE NATHAN L. BENSON D.L.C. 37

**BONNEVILLE PROJECT**  
**LANDS**  
 SEC. 31, 32 & 33 T. 1 N. R. 11 E. W. 4  
 HOOD RIVER COUNTY, OREGON

U.S.C. & G.S. DATUM  
 BEARINGS TRUE  
 CONTOUR INTERVAL, 5 FT.

U.S. ENGINEERS OFFICE, PORTLAND AND DISTRICT, OREGON  
 SUBMITTED BY: *[Signature]*  
 CHECKED BY: *[Signature]*  
 RECOMMENDED BY: *[Signature]*  
 APPROVED: *[Signature]*  
 APRIL 24<sup>th</sup> 1935

R. 0-7-13 OHR