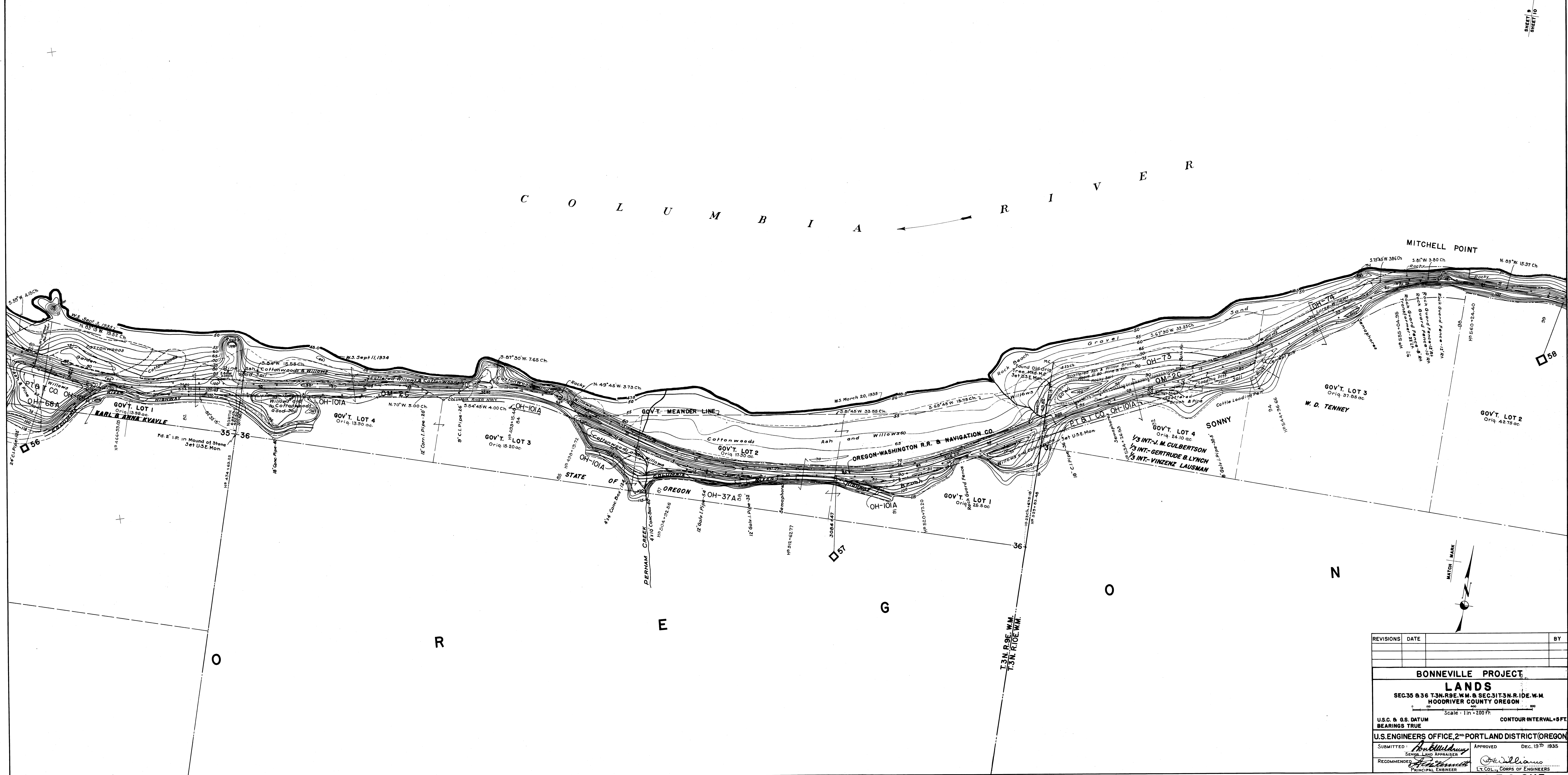


C O L U M B I A R I V E R



REVISIONS	DATE	BY

BONNEVILLE PROJECT
LANDS
 SEC.35 & 36 T.3N. R.9E. W.M. & SEC.31 T.3N. R.10E. W.M.
 HOOD RIVER COUNTY OREGON

Scale: 1 in = 200 ft. CONTOUR INTERVAL - 5 FT.

U.S.C. & G.S. DATUM BEARINGS TRUE

U.S. ENGINEERS OFFICE, 2ND PORTLAND DISTRICT (OREGON)

SUBMITTED: *[Signature]* APPROVED: Dec. 19th 1935
 SENIOR LAND APPRAISER LT. COL. CORPUS OF ENGINEERS

RECOMMENDED: *[Signature]* *[Signature]*
 PRINCIPAL ENGINEER LT. COL. CORPUS OF ENGINEERS