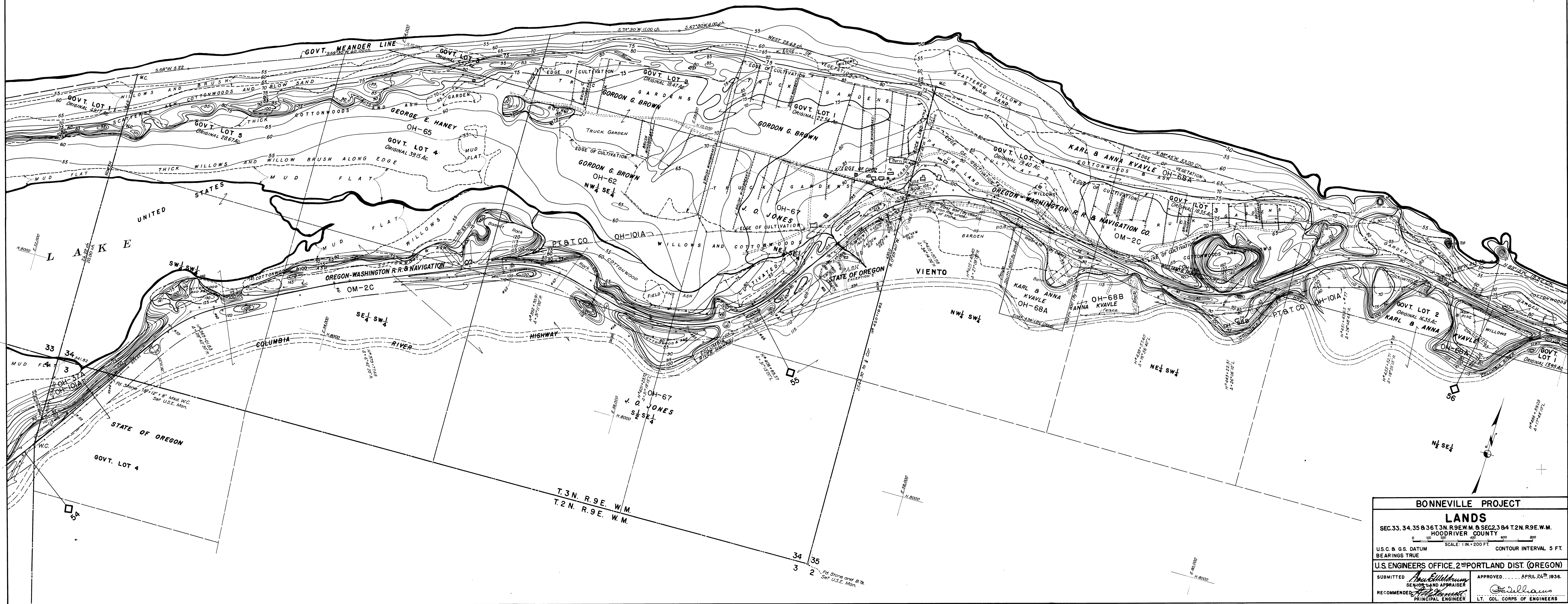


C O L U M B I A R I V E R



BONNEVILLE PROJECT
LANDS
 SEC. 33, 34, 35 & 36 T. 3N. R. 9E. W.M. & SEC. 2, 3 & 4 T. 2N. R. 9E. W.M.
 HOODRIVER COUNTY
 U.S.C. & G.S. DATUM SCALE: 1 IN. = 200 FT. CONTOUR INTERVAL 5 FT.
 BEARINGS TRUE
 U.S. ENGINEERS OFFICE, 2ND PORTLAND DIST. (OREGON)
 SUBMITTED *Wm. E. Williams* SENIOR LAND APPRAISER APPROVED APRIL 24TH 1936.
 RECOMMENDED *Wm. E. Williams* PRINCIPAL ENGINEER LT. COL. CORPS OF ENGINEERS