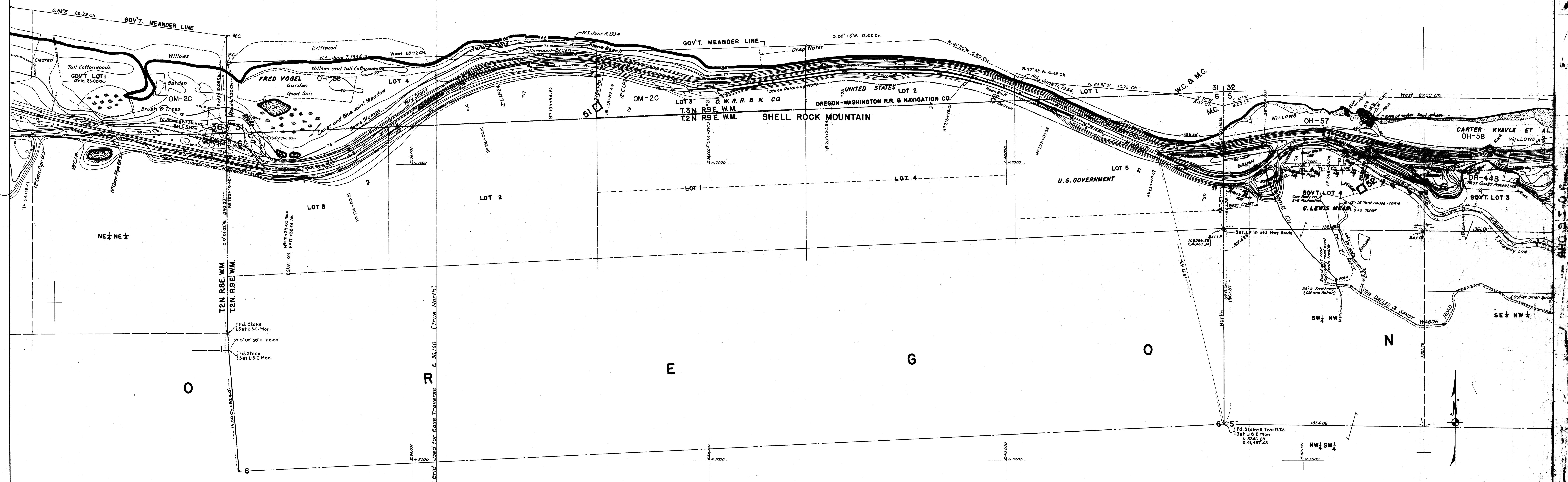


C O L U M B I A

R I V E R



Reference Meridian of Grid used for Base Traverse F. 36,160 (True North)

NOTE:
 Origin of Coordinates is 31.47 ft north and 20.09 ft west
 of U.S.C. & G.S. Station LOCKS shown on Dwg. No. R.O-7-10HR.

BONNEVILLE PROJECT

LANDS
 SEC. 1, T2N, R9E, W.M., SEC. 3, T2N, R9E, W.M.
 SEC. 5 & 6, T2N, R9E, W.M., SEC. 31 & 32, T3N, R9E, W.M.
 HOOD RIVER COUNTY, OREGON

Scale - 1 in = 200 ft
 U.S.C. & G.S. DATUM BEARINGS - TRUE CONTOUR INTERVAL - 5 FT

U.S. ENGINEERS OFFICE - PORTLAND DISTRICT (OREGON)

Submitted: [Signature] Approved: [Signature] DEC 1935

Recommended: [Signature] LT. COL. CORPS OF ENGINEERS

NO.	REVISION	DATE	BY	APR
1	Reference Meridian & Note added	1/14/45	E.W.B.	[Signature]

R.O-7-6-OHR