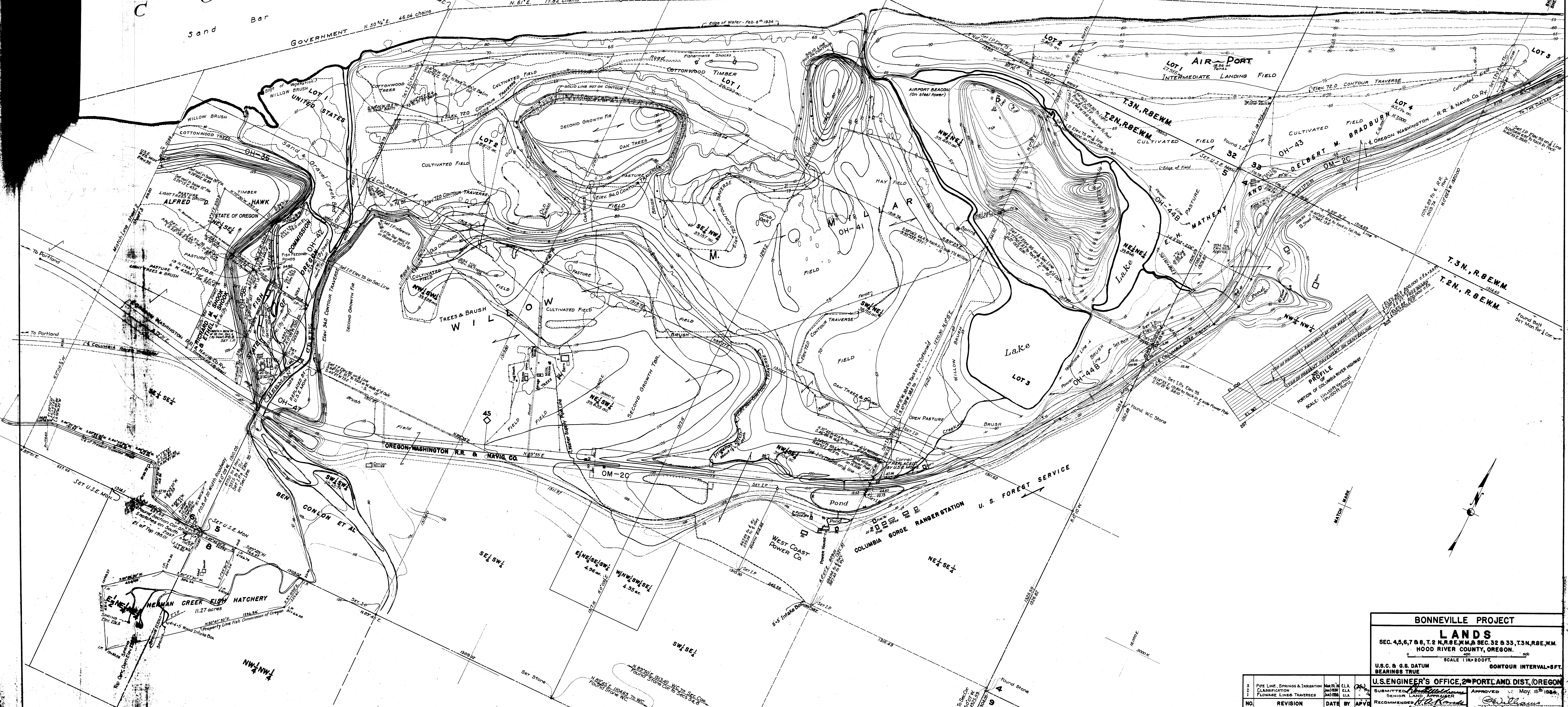


C O L U M B I A R I V E R



BONNEVILLE PROJECT

LANDS
 SEC. 4, 5, 6, 7 & 8, T. 2 N., R. 8 E. W. M. SEC. 32 & 33, T. 3 N., R. 8 E. W. M.
 HOOD RIVER COUNTY, OREGON.

SCALE 1" = 200 FT.
 CONTOUR INTERVAL - 5 FT.

U.S.C. & G.S. DATUM BEARINGS TRUE

U.S. ENGINEER'S OFFICE, 2nd DISTRICT, OREGON

SUBMITTED: *[Signature]* APPROVED: *[Signature]* May 15th 1934
 SENIOR LAND APPRAISER SENIOR ENGINEER
 RECOMMENDED: *[Signature]* *[Signature]*
 SENIOR ENGINEER SENIOR ENGINEER
 PRINCIPAL ENGINEER R **O-7-3 O.H.R.**

NO.	REVISION	DATE	BY	APV
3	PIPE LINE, SPRINGS & IRRIGATION	MAR 23 1934	CL.A.	[Signature]
2	CLASSIFICATION	JUN 28 1934	CL.A.	[Signature]
1	FLOWAGE LINES TRAVERSES	JUN 28 1934	CL.A.	[Signature]