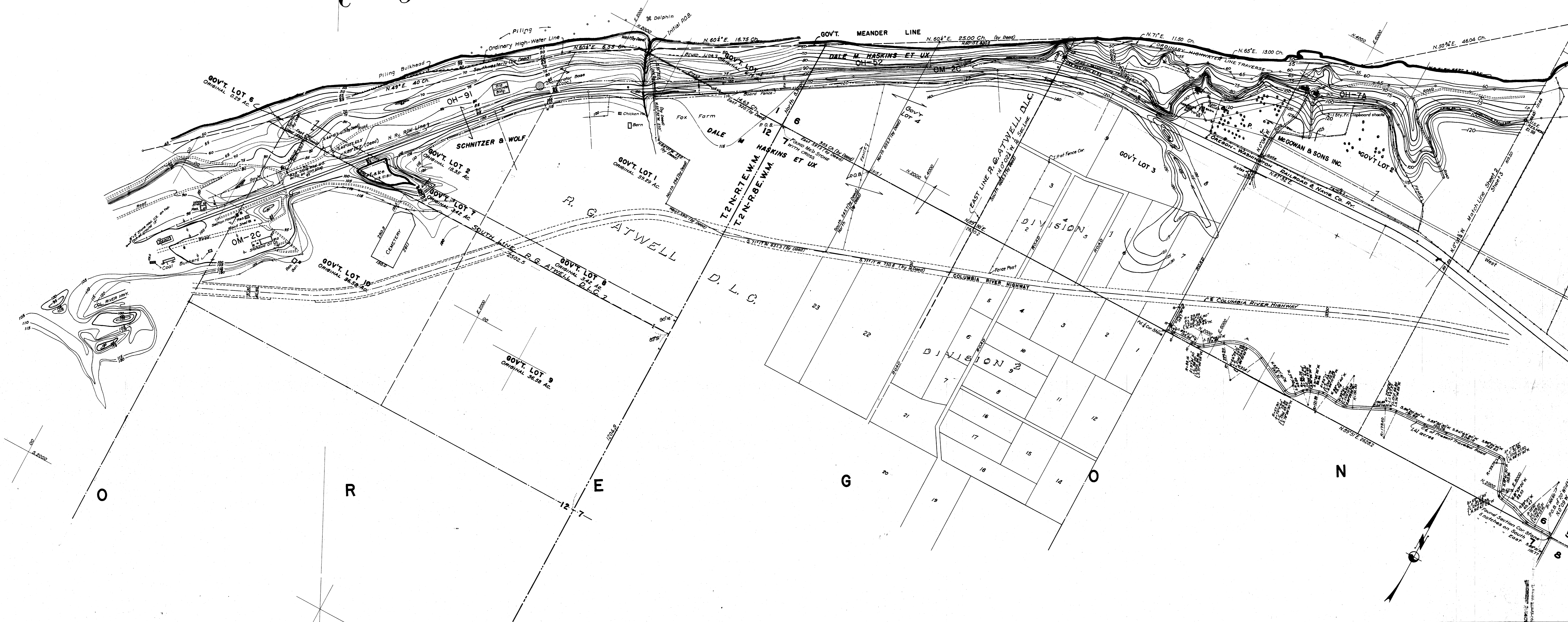


C O L U M B I A

R I V E R



**BONNEVILLE PROJECT**

**LANDS**

SEC. 1 & 2, T. 2 N., R. 7 E., W. 3 SEC. 5 & 7, T. 2 N., R. 8 E., W. 3  
 HOOD RIVER COUNTY, OREGON

Scale: 1 in. = 200 ft.      CONTOUR INTERVAL 5 FT.

U.S.C. & G.S. DATUM      BEARINGS TRUE

U.S. ENGINEERS OFFICE, 2<sup>ND</sup> PORTLAND DIST., (OREGON)

SUBMITTED: *[Signature]*      APPROVED: *[Signature]*      Dec. 1935

SENIOR LAND APPRAISER      SENIOR ENGINEER

RECOMMENDED: *[Signature]*      SPECIAL ENGINEER

**O-7-20**